

ARG58556 anti-CSTF3 / CstF 77 antibody

Package: 50 µg
Store at: -20°C

Summary

Product Description	Goat Polyclonal antibody recognizes CSTF3 / CstF 77
Tested Reactivity	Hu
Predict Reactivity	Ms, Rat, Dog
Tested Application	WB
Host	Goat
Clonality	Polyclonal
Isotype	IgG
Target Name	CSTF3 / CstF 77
Species	Human
Immunogen	Synthetic peptide from the internal region of Human CSTF3 / CstF 77 (NP_001317.1). (C-RETKGKLPYSYKE)
Conjugation	Un-conjugated
Alternate Names	CF-1 77 kDa subunit; Cleavage stimulation factor subunit 3; CSTF-77; CstF-77; CSTF 77 kDa subunit; Cleavage stimulation factor 77 kDa subunit

Application Instructions

Application table	<table><thead><tr><th>Application</th><th>Dilution</th></tr></thead><tbody><tr><td>WB</td><td>0.03 - 0.1 µg/ml</td></tr></tbody></table>	Application	Dilution	WB	0.03 - 0.1 µg/ml
Application	Dilution				
WB	0.03 - 0.1 µg/ml				
Application Note	WB: Recommend incubate at RT for 1h. * The dilutions indicate recommended starting dilutions and the optimal dilutions or concentrations should be determined by the scientist.				
Observed Size	~ 75 kDa				

Properties

Form	Liquid
Purification	Ammonium sulphate precipitation followed by affinity purification with immunogen.
Buffer	Tris saline (pH 7.3), 0.02% Sodium azide and 0.5% BSA.
Preservative	0.02% Sodium azide
Stabilizer	0.5% BSA
Concentration	0.5 mg/ml
Storage instruction	For continuous use, store undiluted antibody at 2-8°C for up to a week. For long-term storage, aliquot and store at -20°C or below. Storage in frost free freezers is not recommended. Avoid repeated freeze/thaw cycles. Suggest spin the vial prior to opening. The antibody solution should be gently mixed before use.

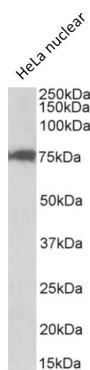
Note

For laboratory research only, not for drug, diagnostic or other use.

Bioinformation

Gene Symbol	CSTF3
Gene Full Name	cleavage stimulation factor, 3' pre-RNA, subunit 3, 77kDa
Background	The protein encoded by this gene is one of three (including CSTF1 and CSTF2) cleavage stimulation factors that combine to form the cleavage stimulation factor complex (CSTF). This complex is involved in the polyadenylation and 3' end cleavage of pre-mRNAs. The encoded protein functions as a homodimer and interacts directly with both CSTF1 and CSTF2 in the CSTF complex. Alternative splicing results in multiple transcript variants encoding different isoforms. [provided by RefSeq, Jul 2008]
Function	One of the multiple factors required for polyadenylation and 3'-end cleavage of mammalian pre-mRNAs. [UniProt]
Calculated Mw	83 kDa

Images



ARG58556 anti-CSTF3 / CstF 77 antibody WB image

Western blot: 35 µg of HeLa nuclear lysate (in RIPA buffer) stained with ARG58556 anti-CSTF3 / CstF 77 antibody at 0.1 µg/ml dilution. Primary incubation was 1 hour. Detected by chemiluminescence.