

ARG58537
anti-CSNK1G3 antibodyPackage: 100 µl
Store at: -20°C

Summary

Product Description	Rabbit Polyclonal antibody recognizes CSNK1G3
Tested Reactivity	Ms
Predict Reactivity	Rat
Tested Application	FACS, IHC-P, WB
Host	Rabbit
Clonality	Polyclonal
Isotype	IgG
Target Name	CSNK1G3
Species	Mouse
Immunogen	KLH-conjugated synthetic peptide corresponding to aa. 333-361 (C-terminus) of Mouse Csnk1g3.
Conjugation	Un-conjugated
Alternate Names	Casein kinase I isoform gamma-3; EC 2.7.11.1; CKI-gamma 3; CSNK1G3L

Application Instructions

Application table	Application	Dilution
	FACS	1:25
	IHC-P	1:10 - 1:50
	WB	1:1000
Application Note	* The dilutions indicate recommended starting dilutions and the optimal dilutions or concentrations should be determined by the scientist.	
Positive Control	Mouse liver	

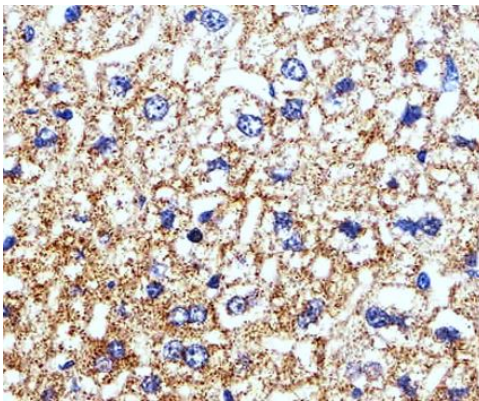
Properties

Form	Liquid
Purification	Purification with Protein A and immunogen peptide.
Buffer	PBS and 0.09% (W/V) Sodium azide.
Preservative	0.09% (W/V) Sodium azide.
Storage instruction	For continuous use, store undiluted antibody at 2-8°C for up to a week. For long-term storage, aliquot and store at -20°C or below. Storage in frost free freezers is not recommended. Avoid repeated freeze/thaw cycles. Suggest spin the vial prior to opening. The antibody solution should be gently mixed before use.
Note	For laboratory research only, not for drug, diagnostic or other use.

Bioinformation

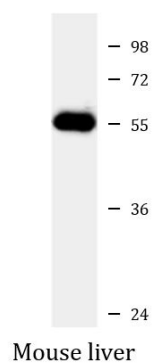
Gene Symbol	CSNK1G3
Gene Full Name	casein kinase 1, gamma 3
Background	This gene encodes a member of a family of serine/threonine protein kinases that phosphorylate caseins and other acidic proteins. A related protein in the African clawed frog participates in the transmission of Wnt/beta-catenin signaling. Alternatively spliced transcript variants encoding multiple isoforms have been observed for this gene. [provided by RefSeq, Jul 2012]
Function	Serine/threonine-protein kinase. Casein kinases are operationally defined by their preferential utilization of acidic proteins such as caseins as substrates. It can phosphorylate a large number of proteins. Participates in Wnt signaling. Regulates fast synaptic transmission mediated by glutamate (By similarity). [UniProt]
Calculated Mw	51 kDa
PTM	Autophosphorylated. [UniProt]
Cellular Localization	Cytoplasm. [UniProt]

Images



ARG58537 anti-CSNK1G3 antibody IHC-P image

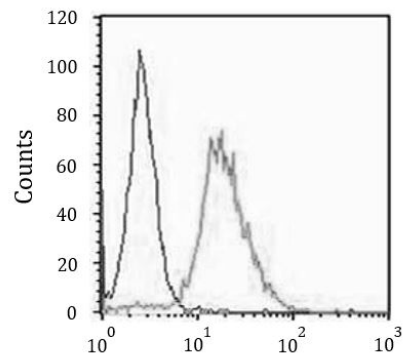
Immunohistochemistry: Paraffin-embedded Mouse liver tissue stained with ARG58537 anti-CSNK1G3 antibody at 1:25 dilution.



ARG58537 anti-CSNK1G3 antibody WB image

Western blot: 35 µg of Mouse liver lysate stained with ARG58537 anti-CSNK1G3 antibody at 1:1000 dilution.

ARG58537 anti-CSNK1G3 antibody FACS image



Flow Cytometry: NIH/3T3 cells stained with ARG58537 anti-CSNK1G3 antibody (right histogram) at 1:25 dilution or isotype control antibody (left histogram), followed by incubation with Alexa Fluor® 488 labelled secondary antibody.