

ARG58527 anti-DRD1 / Dopamine Receptor D1 antibody

Package: 100 µl
Store at: -20°C

Summary

Product Description	Rabbit Polyclonal antibody recognizes DRD1 / Dopamine Receptor D1
Tested Reactivity	Hu, Ms
Tested Application	WB
Host	Rabbit
Clonality	Polyclonal
Isotype	IgG
Target Name	DRD1 / Dopamine Receptor D1
Species	Human
Immunogen	Synthetic peptide derived from Human DRD1.
Conjugation	Un-conjugated
Alternate Names	DADR; DRD1A; D(1A) dopamine receptor; Dopamine D1 receptor

Application Instructions

Application table	Application	Dilution
	WB	1:500 - 1:2000
Application Note	* The dilutions indicate recommended starting dilutions and the optimal dilutions or concentrations should be determined by the scientist.	
Positive Control	SH-SY5Y	
Observed Size	~ 76 kDa	

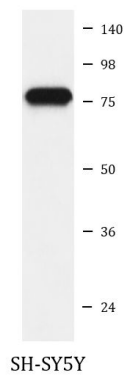
Properties

Form	Liquid
Purification	Affinity purified.
Buffer	PBS (pH 7.4), 0.02% Sodium azide and 50% Glycerol.
Preservative	0.02% Sodium azide
Stabilizer	50% Glycerol
Storage instruction	For continuous use, store undiluted antibody at 2-8°C for up to a week. For long-term storage, aliquot and store at -20°C. Storage in frost free freezers is not recommended. Avoid repeated freeze/thaw cycles. Suggest spin the vial prior to opening. The antibody solution should be gently mixed before use.
Note	For laboratory research only, not for drug, diagnostic or other use.

Bioinformation

Gene Symbol	DRD1
Gene Full Name	dopamine receptor D1
Background	This gene encodes the D1 subtype of the dopamine receptor. The D1 subtype is the most abundant dopamine receptor in the central nervous system. This G-protein coupled receptor stimulates adenylyl cyclase and activates cyclic AMP-dependent protein kinases. D1 receptors regulate neuronal growth and development, mediate some behavioral responses, and modulate dopamine receptor D2-mediated events. Alternate transcription initiation sites result in two transcript variants of this gene. [provided by RefSeq, Jul 2008]
Function	Dopamine receptor whose activity is mediated by G proteins which activate adenylyl cyclase. [UniProt]
Calculated Mw	49 kDa
Cellular Localization	Endoplasmic reticulum membrane > Multi-pass membrane protein. [UniProt]

Images



ARG58527 anti-DRD1 / Dopamine Receptor D1 antibody WB image

Western blot: SH-SY5Y cell lysate stained with ARG58527 anti-DRD1 / Dopamine Receptor D1 antibody.