

ARG58520 anti-Cathepsin G antibody

Package: 50 µg
Store at: -20°C

Summary

Product Description	Rabbit Polyclonal antibody recognizes Cathepsin G
Tested Reactivity	Hu
Tested Application	IHC-P, WB
Host	Rabbit
Clonality	Polyclonal
Isotype	IgG
Target Name	Cathepsin G
Species	Human
Immunogen	E. coli-derived Human Cathepsin G recombinant protein (Position: R25-E252). Human Cathepsin G shares 69.7% amino acid (aa) sequence identity with Mouse Cathepsin G.
Conjugation	Un-conjugated
Alternate Names	EC 3.4.21.20; Cathepsin G; CG; CATG

Application Instructions

Application table	Application	Dilution
	IHC-P	0.5 - 1 µg/ml
	WB	0.1 - 0.5 µg/ml

Application Note
IHC-P: Antigen Retrieval: By heat mediation.
* The dilutions indicate recommended starting dilutions and the optimal dilutions or concentrations should be determined by the scientist.

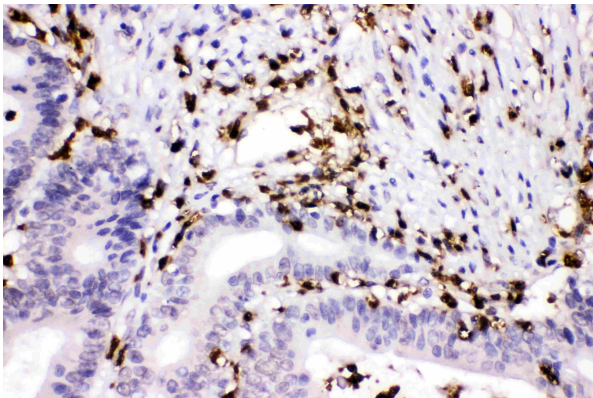
Properties

Form	Liquid
Purification	Affinity purification with immunogen.
Buffer	0.9% NaCl, 0.2% Na ₂ HPO ₄ , 0.05% Sodium azide and 5% BSA.
Preservative	0.05% Sodium azide
Stabilizer	5% BSA
Concentration	0.5 mg/ml
Storage instruction	For continuous use, store undiluted antibody at 2-8°C for up to a week. For long-term storage, aliquot and store at -20°C or below. Storage in frost free freezers is not recommended. Avoid repeated freeze/thaw cycles. Suggest spin the vial prior to opening. The antibody solution should be gently mixed before use.
Note	For laboratory research only, not for drug, diagnostic or other use.

Bioinformation

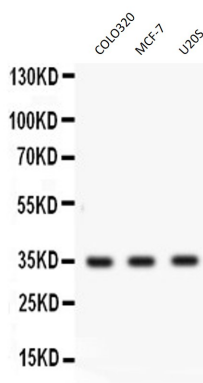
Gene Symbol	CTSG
Gene Full Name	cathepsin G
Background	The protein encoded by this gene, a member of the peptidase S1 protein family, is found in azurophil granules of neutrophilic polymorphonuclear leukocytes. The encoded protease has a specificity similar to that of chymotrypsin C, and may participate in the killing and digestion of engulfed pathogens, and in connective tissue remodeling at sites of inflammation. In addition, the encoded protein is antimicrobial, with bacteriocidal activity against <i>S. aureus</i> and <i>N. gonorrhoeae</i> . Transcript variants utilizing alternative polyadenylation signals exist for this gene. [provided by RefSeq, Sep 2014]
Function	Serine protease with trypsin- and chymotrypsin-like specificity. Cleaves complement C3. Has antibacterial activity against the Gram-negative bacterium <i>P.aeruginosa</i> , antibacterial activity is inhibited by LPS from <i>P.aeruginosa</i> , Z-Gly-Leu-Phe-CH ₂ Cl and phenylmethylsulfonyl fluoride. [UniProt]
Calculated Mw	29 kDa
Cellular Localization	Cell surface. [UniProt]

Images



ARG58520 anti-Cathepsin G antibody IHC-P image

Immunohistochemistry: Paraffin-embedded Human intestinal cancer stained with ARG58520 anti-Cathepsin G antibody at 1 µg/ml dilution.



ARG58520 anti-Cathepsin G antibody WB image

Western blot: COLO320, MCF-7 and U2OS whole cell lysates stained with ARG58520 anti-Cathepsin G antibody at 0.5 µg/ml dilution.