

## ARG58512 anti-DRD1 / Dopamine Receptor D1 antibody

Package: 50 µg  
Store at: -20°C

### Summary

Product Description	Rabbit Polyclonal antibody recognizes DRD1 / Dopamine Receptor D1
Tested Reactivity	Hu, Rat
Predict Reactivity	Hm
Tested Application	IHC-P, WB
Host	Rabbit
Clonality	Polyclonal
Isotype	IgG
Target Name	DRD1 / Dopamine Receptor D1
Species	Human
Immunogen	Synthetic peptide corresponding to a sequence in the middle region of Human DRD1 (221-242aa AQKQIRRIAALERA AVHAKNCQ), different from the related Rat and Mouse sequences by one amino acid.
Conjugation	Un-conjugated
Alternate Names	DADR; DRD1A; D(1A) dopamine receptor; Dopamine D1 receptor

### Application Instructions

Application table	Application	Dilution
	IHC-P	0.5 - 1 µg/ml
	WB	0.1 - 0.5 µg/ml
Application Note	IHC-P: Antigen Retrieval: By heat mediation. * The dilutions indicate recommended starting dilutions and the optimal dilutions or concentrations should be determined by the scientist.	

### Properties

Form	Liquid
Purification	Affinity purification with immunogen.
Buffer	0.9% NaCl, 0.2% Na <sub>2</sub> HPO <sub>4</sub> , 0.05% Thimerosal, 0.05% Sodium azide and 5% BSA.
Preservative	0.05% Thimerosal and 0.05% Sodium azide
Stabilizer	5% BSA
Concentration	0.5 mg/ml
Storage instruction	For continuous use, store undiluted antibody at 2-8°C for up to a week. For long-term storage, aliquot and store at -20°C or below. Storage in frost free freezers is not recommended. Avoid repeated freeze/thaw cycles. Suggest spin the vial prior to opening. The antibody solution should be gently mixed before use.

Note

For laboratory research only, not for drug, diagnostic or other use.

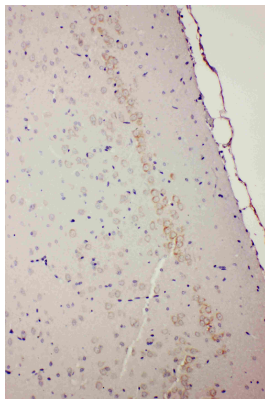
## Bioinformation

---

Gene Symbol	DRD1
Gene Full Name	dopamine receptor D1
Background	This gene encodes the D1 subtype of the dopamine receptor. The D1 subtype is the most abundant dopamine receptor in the central nervous system. This G-protein coupled receptor stimulates adenylyl cyclase and activates cyclic AMP-dependent protein kinases. D1 receptors regulate neuronal growth and development, mediate some behavioral responses, and modulate dopamine receptor D2-mediated events. Alternate transcription initiation sites result in two transcript variants of this gene. [provided by RefSeq, Jul 2008]
Function	Dopamine receptor whose activity is mediated by G proteins which activate adenylyl cyclase. [UniProt]
Calculated Mw	49 kDa
Cellular Localization	Cell membrane; Multi-pass membrane protein. Endoplasmic reticulum membrane; Multi-pass membrane protein. Transport from the endoplasmic reticulum to the cell surface is regulated by interaction with DNAJC14. [UniProt]

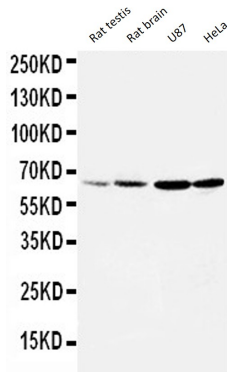
---

## Images



ARG58512 anti-DRD1 / Dopamine Receptor D1 antibody IHC-P image

Immunohistochemistry: Paraffin-embedded Rat brain stained with ARG58512 anti-DRD1 / Dopamine Receptor D1 antibody.



ARG58512 anti-DRD1 / Dopamine Receptor D1 antibody WB image

Western blot: Rat testis, Rat brain, U87 and HeLa lysates stained with ARG58512 anti-DRD1 / Dopamine Receptor D1 antibody.