

## ARG58505 anti-Factor D antibody

Package: 50 µg  
Store at: -20°C

### Summary

Product Description	Rabbit Polyclonal antibody recognizes Factor D
Tested Reactivity	Ms, Rat
Tested Application	IHC-P, WB
Host	Rabbit
Clonality	Polyclonal
Isotype	IgG
Target Name	Factor D
Species	Rat
Immunogen	E. coli-derived Rat Factor D recombinant protein (Position: I26-A263).
Conjugation	Un-conjugated
Alternate Names	C3 convertase activator; PFD; Properdin factor D; DF; Complement factor D; ADIPSIN; EC 3.4.21.46; ADN; Adipsin

### Application Instructions

Application table	Application	Dilution
	IHC-P	0.5 - 1 µg/ml
	WB	0.1 - 0.5 µg/ml

**Application Note**  
IHC-P: Antigen Retrieval: Heat mediated was performed in Citrate buffer (pH 6.0) for 20 min.  
\* The dilutions indicate recommended starting dilutions and the optimal dilutions or concentrations should be determined by the scientist.

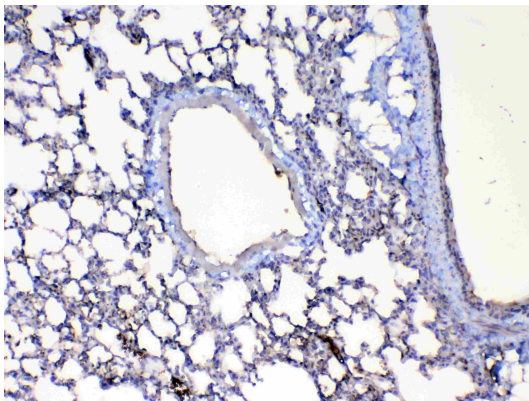
### Properties

Form	Liquid
Buffer	0.9% NaCl, 0.2% Na <sub>2</sub> HPO <sub>4</sub> , 0.05% Sodium azide and 4% Trehalose.
Preservative	0.05% Sodium azide
Stabilizer	4% Trehalose
Concentration	0.5 mg/ml
Storage instruction	For continuous use, store undiluted antibody at 2-8°C for up to a week. For long-term storage, aliquot and store at -20°C or below. Storage in frost free freezers is not recommended. Avoid repeated freeze/thaw cycles. Suggest spin the vial prior to opening. The antibody solution should be gently mixed before use.
Note	For laboratory research only, not for drug, diagnostic or other use.

## Bioinformation

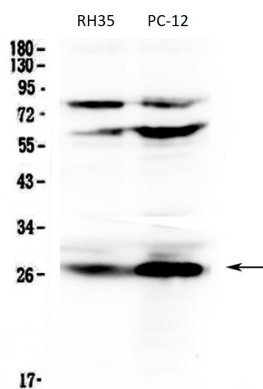
Gene Symbol	CFD
Gene Full Name	complement factor D (adipsin)
Background	The protein encoded by this gene is a member of the trypsin family of peptidases. The encoded protein is a component of the alternative complement pathway best known for its role in humoral suppression of infectious agents. This protein is also a serine protease that is secreted by adipocytes into the bloodstream. Finally, the encoded protein has a high level of expression in fat, suggesting a role for adipose tissue in immune system biology. [provided by RefSeq, Jul 2008]
Function	Factor D cleaves factor B when the latter is complexed with factor C3b, activating the C3bbb complex, which then becomes the C3 convertase of the alternate pathway. Its function is homologous to that of C1s in the classical pathway. [UniProt]
Calculated Mw	27 kDa
Cellular Localization	Secreted. [UniProt]

## Images



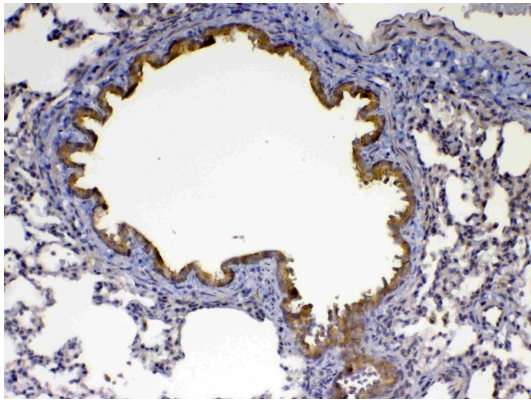
ARG58505 anti-Factor D antibody IHC-P image

Immunohistochemistry: Paraffin-embedded Mouse lung tissue. Antigen Retrieval: Heat mediated was performed in Citrate buffer (pH 6.0, epitope retrieval solution) for 20 min. The tissue section was blocked with 10% goat serum. The tissue section was then stained with ARG58505 anti-Factor D antibody at 1 µg/ml dilution, overnight at 4°C.



ARG58505 anti-Factor D antibody WB image

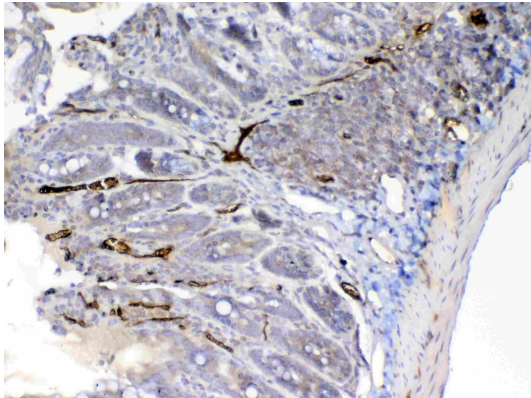
Western blot: 50 µg of samples under reducing conditions. RH35 and PC-12 cell lysates stained with ARG58505 anti-Factor D antibody at 0.5 µg/ml, overnight at 4°C.



ARG58505 anti-Factor D antibody IHC-P image

Immunohistochemistry: Paraffin-embedded Rat lung tissue. Antigen Retrieval: Heat mediated was performed in Citrate buffer (pH 6.0, epitope retrieval solution) for 20 min. The tissue section was blocked with 10% goat serum. The tissue section was then stained with ARG58505 anti-Factor D antibody at 1  $\mu\text{g}/\text{ml}$  dilution, overnight at 4°C.

---



ARG58505 anti-Factor D antibody IHC-P image

Immunohistochemistry: Paraffin-embedded Rat small intestine tissue. Antigen Retrieval: Heat mediated was performed in Citrate buffer (pH 6.0, epitope retrieval solution) for 20 min. The tissue section was blocked with 10% goat serum. The tissue section was then stained with ARG58505 anti-Factor D antibody at 1  $\mu\text{g}/\text{ml}$  dilution, overnight at 4°C.

---