

**ARG58496**  
anti-CTRB1 antibodyPackage: 100 µl  
Store at: -20°C

### Summary

Product Description	Rabbit Polyclonal antibody recognizes CTRB1
Tested Reactivity	Hu, Ms, Rat
Tested Application	ICC/IF, IHC-P, WB
Host	Rabbit
Clonality	Polyclonal
Isotype	IgG
Target Name	CTRB1
Species	Human
Immunogen	Recombinant fusion protein corresponding to aa. 79-263 of Human CTRB1 (NP_001897.4).
Conjugation	Un-conjugated
Alternate Names	CTRB

### Application Instructions

Application table	Application	Dilution
	ICC/IF	1:50 - 1:200
	IHC-P	1:50 - 1:200
	WB	1:500 - 1:2000
Application Note	* The dilutions indicate recommended starting dilutions and the optimal dilutions or concentrations should be determined by the scientist.	
Positive Control	Mouse spleen	
Observed Size	28 kDa	

### Properties

Form	Liquid
Purification	Affinity purified.
Buffer	PBS (pH 7.3), 0.02% Sodium azide and 50% Glycerol.
Preservative	0.02% Sodium azide
Stabilizer	50% Glycerol
Storage instruction	For continuous use, store undiluted antibody at 2-8°C for up to a week. For long-term storage, aliquot and store at -20°C. Storage in frost free freezers is not recommended. Avoid repeated freeze/thaw cycles. Suggest spin the vial prior to opening. The antibody solution should be gently mixed before use.

**Note**

For laboratory research only, not for drug, diagnostic or other use.

**Bioinformation**

---

Gene Symbol CTRB1

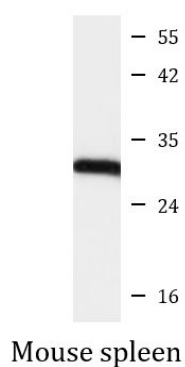
Gene Full Name chymotrypsinogen B1

**Background** This gene encodes a member of the serine protease family of enzymes and forms a principal precursor of the pancreatic proteolytic enzymes. The encoded preproprotein is synthesized in the acinar cells of the pancreas and secreted into the small intestine where it undergoes proteolytic activation to generate a functional enzyme. This gene is located adjacent to a related chymotrypsinogen gene. This gene encodes distinct isoforms, some or all of which may undergo similar processing to generate the mature protein. [provided by RefSeq, Jul 2016]

Calculated Mw 28 kDa

**Images**

---



ARG58496 anti-CTRB1 antibody WB image

Western blot: 25 µg of Mouse spleen lysate stained with ARG58496 anti-CTRB1 antibody at 1:1000 dilution.