

ARG58487
anti-beta Casein antibodyPackage: 100 µl
Store at: -20°C

Summary

Product Description	Rabbit Polyclonal antibody recognizes beta Casein
Tested Reactivity	Hu
Tested Application	WB
Host	Rabbit
Clonality	Polyclonal
Isotype	IgG
Target Name	beta Casein
Species	Human
Immunogen	Synthetic peptide corresponding to a sequence within aa. 1-100 of Human beta Casein (NP_001882.1).
Conjugation	Un-conjugated
Alternate Names	Beta-casein; CASB

Application Instructions

Application table	Application	Dilution
	WB	1:500 - 1:1000
Application Note	* The dilutions indicate recommended starting dilutions and the optimal dilutions or concentrations should be determined by the scientist.	
Positive Control	Mouse liver	
Observed Size	30 kDa	

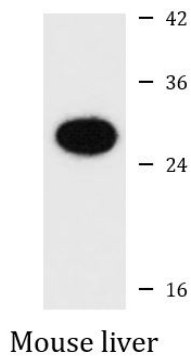
Properties

Form	Liquid
Purification	Affinity purified.
Buffer	PBS (pH 7.3), 0.02% Sodium azide and 50% Glycerol.
Preservative	0.02% Sodium azide
Stabilizer	50% Glycerol
Storage instruction	For continuous use, store undiluted antibody at 2-8°C for up to a week. For long-term storage, aliquot and store at -20°C. Storage in frost free freezers is not recommended. Avoid repeated freeze/thaw cycles. Suggest spin the vial prior to opening. The antibody solution should be gently mixed before use.
Note	For laboratory research only, not for drug, diagnostic or other use.

Bioinformation

Gene Symbol	CSN2
Gene Full Name	casein beta
Background	This gene is a member of the beta casein family. There are two types of casein protein, beta (encoded by this gene) and kappa, both of which are secreted in human milk. Beta casein is the principal protein in human milk and the primary source of essential amino acids for a suckling infant. Beta and kappa casein proteins acting together form spherical micelles which bind within them important dietary minerals, such as calcium and phosphorous. Alternative splicing results in multiple transcript variants. [provided by RefSeq, Nov 2014]
Function	Important role in determination of the surface properties of the casein micelles. [UniProt]
Calculated Mw	25 kDa
PTM	Form 1-P is phosphorylated once; half of the molecules are phosphorylated on Ser-24, half on Ser-25. [UniProt]
Cellular Localization	Secreted. [UniProt]

Images



ARG58487 anti-beta Casein antibody WB image

Western blot: 25 µg of Mouse liver lysate stained with ARG58487 anti-beta Casein antibody at 1:3000 dilution.