

ARG58465 anti-CS / Citrate synthase antibody

Package: 100 µl
Store at: -20°C

Summary

Product Description	Rabbit Polyclonal antibody recognizes CS / Citrate synthase
Tested Reactivity	Hu, Ms, Rat
Tested Application	ICC/IF, WB
Host	Rabbit
Clonality	Polyclonal
Isotype	IgG
Target Name	CS / Citrate synthase
Species	Human
Immunogen	Recombinant fusion protein corresponding to aa. 167-466 of Human CS / Citrate synthase (NP_004068.2).
Conjugation	Un-conjugated
Alternate Names	Si; EC 2.3.3.1; Citrate synthase, mitochondrial; Citrate

Application Instructions

Application table	Application	Dilution
	ICC/IF	1:50 - 1:200
	WB	1:500 - 1:2000
Application Note	* The dilutions indicate recommended starting dilutions and the optimal dilutions or concentrations should be determined by the scientist.	
Positive Control	Jurkat	
Observed Size	50 kDa	

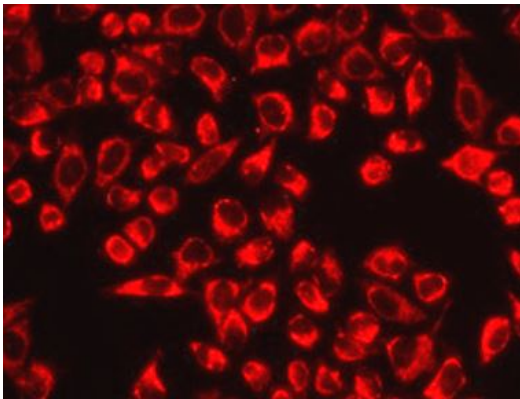
Properties

Form	Liquid
Purification	Affinity purified.
Buffer	PBS (pH 7.3), 0.02% Sodium azide and 50% Glycerol.
Preservative	0.02% Sodium azide
Stabilizer	50% Glycerol
Storage instruction	For continuous use, store undiluted antibody at 2-8°C for up to a week. For long-term storage, aliquot and store at -20°C. Storage in frost free freezers is not recommended. Avoid repeated freeze/thaw cycles. Suggest spin the vial prior to opening. The antibody solution should be gently mixed before use.
Note	For laboratory research only, not for drug, diagnostic or other use.

Bioinformation

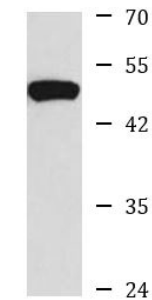
Gene Symbol	CS
Gene Full Name	citrate synthase
Background	The protein encoded by this gene is a Krebs tricarboxylic acid cycle enzyme that catalyzes the synthesis of citrate from oxaloacetate and acetyl coenzyme A. The enzyme is found in nearly all cells capable of oxidative metabolism. This protein is nuclear encoded and transported into the mitochondrial matrix, where the mature form is found. [provided by RefSeq, Jul 2008]
Calculated Mw	52 kDa
Cellular Localization	Mitochondrion matrix. [UniProt]

Images



ARG58465 anti-CS / Citrate synthase antibody ICC/IF image

Immunofluorescence: MCF-7 cells stained with ARG58465 anti-CS / Citrate synthase antibody.



Jurkat

ARG58465 anti-CS / Citrate synthase antibody WB image

Western blot: 25 µg of Jurkat cell lysate stained with ARG58465 anti-CS / Citrate synthase antibody at 1:1000 dilution.