

**ARG58452**  
**anti-DRD3 / Dopamine Receptor D3 antibody**Package: 100 µl  
Store at: -20°C

### Summary

Product Description	Rabbit Polyclonal antibody recognizes DRD3 / Dopamine Receptor D3
Tested Reactivity	Hu, Ms, Rat
Tested Application	ICC/IF, WB
Host	Rabbit
Clonality	Polyclonal
Isotype	IgG
Target Name	DRD3 / Dopamine Receptor D3
Species	Human
Immunogen	Recombinant fusion protein corresponding to aa. 213-329 of Human DRD3 / Dopamine Receptor D3 (NP_000787.2).
Conjugation	Un-conjugated
Alternate Names	D3DR; ETM1; FET1; D(3) dopamine receptor; Dopamine D3 receptor

### Application Instructions

Application table	Application	Dilution
	ICC/IF	1:50 - 1:100
	WB	1:500 - 1:1000
Application Note	* The dilutions indicate recommended starting dilutions and the optimal dilutions or concentrations should be determined by the scientist.	
Observed Size	44 kDa	

### Properties

Form	Liquid
Purification	Affinity purified.
Buffer	PBS (pH 7.3), 0.02% Sodium azide and 50% Glycerol.
Preservative	0.02% Sodium azide
Stabilizer	50% Glycerol
Storage instruction	For continuous use, store undiluted antibody at 2-8°C for up to a week. For long-term storage, aliquot and store at -20°C. Storage in frost free freezers is not recommended. Avoid repeated freeze/thaw cycles. Suggest spin the vial prior to opening. The antibody solution should be gently mixed before use.
Note	For laboratory research only, not for drug, diagnostic or other use.

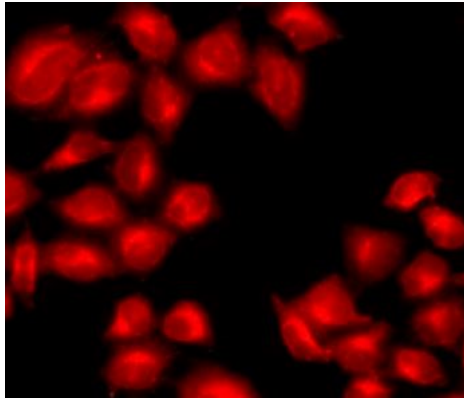
## Bioinformation

---

Gene Symbol	DRD3
Gene Full Name	dopamine receptor D3
Background	This gene encodes the D3 subtype of the five (D1-D5) dopamine receptors. The activity of the D3 subtype receptor is mediated by G proteins which inhibit adenylyl cyclase. This receptor is localized to the limbic areas of the brain, which are associated with cognitive, emotional, and endocrine functions. Genetic variation in this gene may be associated with susceptibility to hereditary essential tremor 1. Alternative splicing of this gene results in transcript variants encoding different isoforms, although some variants may be subject to nonsense-mediated decay (NMD). [provided by RefSeq, Jul 2008]
Function	Dopamine receptor whose activity is mediated by G proteins which inhibit adenylyl cyclase. Promotes cell proliferation. [UniProt]
Calculated Mw	44 kDa
PTM	Phosphorylated by GRK4 (GRK4-alpha and GRK4-gamma). [UniProt]
Cellular Localization	Cell membrane, Multi-pass membrane protein. [UniProt]

## Images

---



ARG58452 anti-DRD3 / Dopamine Receptor D3 antibody ICC/IF image

Immunofluorescence: U2OS cells stained with ARG58452 anti-DRD3 / Dopamine Receptor D3 antibody.