

## ARG58437 anti-CHRNE antibody

Package: 50 µg  
Store at: -20°C

### Summary

Product Description	Goat Polyclonal antibody recognizes CHRNE
Tested Reactivity	Ms
Predict Reactivity	Hu, Rat, Cow
Tested Application	WB
Host	Goat
Clonality	Polyclonal
Isotype	IgG
Target Name	CHRNE
Species	Human
Immunogen	Synthetic peptide from the internal region of Human CHRNE (NP_000071.1). (C-DQEATGEEVSD)
Conjugation	Un-conjugated
Alternate Names	FCCMS; CMS1E; CMS1D; SCCMS; CMS2A; Acetylcholine receptor subunit epsilon; CMS4B; CMS4C; ACHRE; CMS4A

### Application Instructions

Application table	Application	Dilution
	WB	1 - 3 µg/ml
Application Note	WB: Recommend incubate at RT for 1h. * The dilutions indicate recommended starting dilutions and the optimal dilutions or concentrations should be determined by the scientist.	
Observed Size	~ 55 kDa	

### Properties

Form	Liquid
Purification	Ammonium sulphate precipitation followed by affinity purification with immunogen.
Buffer	Tris saline (pH 7.3), 0.02% Sodium azide and 0.5% BSA.
Preservative	0.02% Sodium azide
Stabilizer	0.5% BSA
Concentration	0.5 mg/ml
Storage instruction	For continuous use, store undiluted antibody at 2-8°C for up to a week. For long-term storage, aliquot and store at -20°C or below. Storage in frost free freezers is not recommended. Avoid repeated freeze/thaw cycles. Suggest spin the vial prior to opening. The antibody solution should be gently mixed before use.

**Note**

For laboratory research only, not for drug, diagnostic or other use.

## Bioinformation

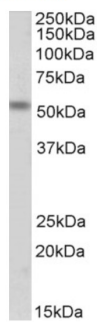
---

Gene Symbol	CHRNE
Gene Full Name	cholinergic receptor, nicotinic, epsilon (muscle)
Background	Acetylcholine receptors at mature mammalian neuromuscular junctions are pentameric protein complexes composed of four subunits in the ratio of two alpha subunits to one beta, one epsilon, and one delta subunit. The acetylcholine receptor changes subunit composition shortly after birth when the epsilon subunit replaces the gamma subunit seen in embryonic receptors. Mutations in the epsilon subunit are associated with congenital myasthenic syndrome. [provided by RefSeq, Sep 2009]
Function	After binding acetylcholine, the AChR responds by an extensive change in conformation that affects all subunits and leads to opening of an ion-conducting channel across the plasma membrane. [UniProt]
Calculated Mw	55 kDa

## Images

---

Mouse fetal skeletal muscle



### ARG58437 anti-CHRNE antibody WB image

Western blot: 35  $\mu$ g of Mouse fetal skeletal muscle lysate (in RIPA buffer) stained with ARG58437 anti-CHRNE antibody at 1  $\mu$ g/ml dilution. Primary incubation was 1 hour. Detected by chemiluminescence.