

**ARG58431**  
anti-CISH / Cis 1 antibodyPackage: 50 µg  
Store at: -20°C

### Summary

Product Description	Rabbit Polyclonal antibody recognizes CISH / Cis 1
Tested Reactivity	Hu, Rat
Predict Reactivity	Hm
Tested Application	IHC-P
Host	Rabbit
Clonality	Polyclonal
Isotype	IgG
Target Name	CISH / Cis 1
Species	Human
Immunogen	Synthetic peptide corresponding to a sequence at the C-terminus of Human CISH(241-258aa LPLPRRMADYLRQYPFQL), identical to the related Rat and Mouse sequences.
Conjugation	Un-conjugated
Alternate Names	BACTS2; CIS-1; CIS; SOCS; Protein G18; G18; Suppressor of cytokine signaling; Cytokine-inducible SH2-containing protein

### Application Instructions

Application table	Application	Dilution
	IHC-P	0.5 - 1 µg/ml
Application Note	IHC-P: Antigen Retrieval: By heat mediation. * The dilutions indicate recommended starting dilutions and the optimal dilutions or concentrations should be determined by the scientist.	

### Properties

Form	Liquid
Purification	Affinity purification with immunogen.
Buffer	0.9% NaCl, 0.2% Na <sub>2</sub> HPO <sub>4</sub> , 0.05% Thimerosal, 0.05% Sodium azide and 5% BSA.
Preservative	0.05% Thimerosal and 0.05% Sodium azide
Stabilizer	5% BSA
Concentration	0.5 mg/ml
Storage instruction	For continuous use, store undiluted antibody at 2-8°C for up to a week. For long-term storage, aliquot and store at -20°C or below. Storage in frost free freezers is not recommended. Avoid repeated freeze/thaw cycles. Suggest spin the vial prior to opening. The antibody solution should be gently mixed before use.

Note

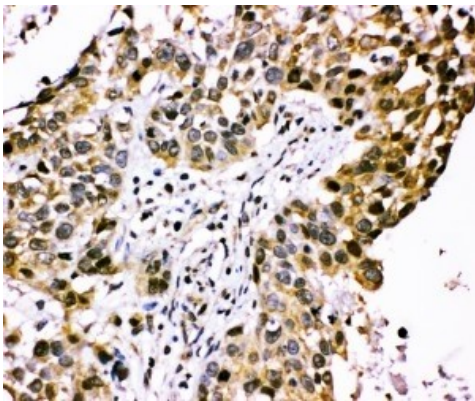
For laboratory research only, not for drug, diagnostic or other use.

## Bioinformation

---

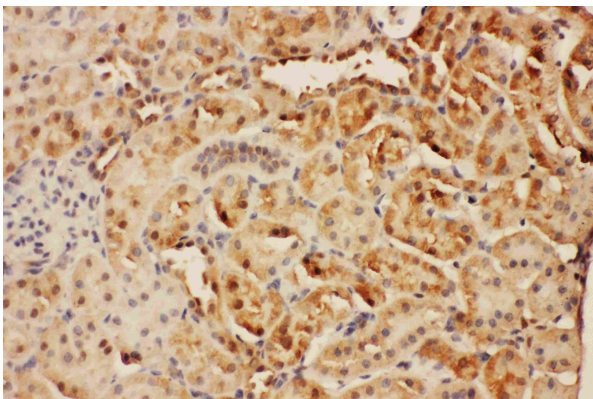
Gene Symbol	CISH
Gene Full Name	cytokine inducible SH2-containing protein
Background	The protein encoded by this gene contains a SH2 domain and a SOCS box domain. The protein thus belongs to the cytokine-induced STAT inhibitor (CIS), also known as suppressor of cytokine signaling (SOCS) or STAT-induced STAT inhibitor (SSI), protein family. CIS family members are known to be cytokine-inducible negative regulators of cytokine signaling. The expression of this gene can be induced by IL2, IL3, GM-CSF and EPO in hematopoietic cells. Proteasome-mediated degradation of this protein has been shown to be involved in the inactivation of the erythropoietin receptor. Multiple transcript variants encoding different isoforms have been found for this gene. [provided by RefSeq, Aug 2008]
Function	SOCS family proteins form part of a classical negative feedback system that regulates cytokine signal transduction. CIS is involved in the negative regulation of cytokines that signal through the JAK-STAT5 pathway such as erythropoietin, prolactin and interleukin 3 (IL3) receptor. Inhibits STAT5 trans-activation by suppressing its tyrosine phosphorylation. May be a substrate-recognition component of a SCF-like ECS (Elongin BC-CUL2/5-SOCS-box protein) E3 ubiquitin-protein ligase complex which mediates the ubiquitination and subsequent proteasomal degradation of target proteins (By similarity). [UniProt]
Calculated Mw	29 kDa
PTM	Association with EPOR may target the protein for proteolysis by the ubiquitin-dependent proteasome pathway. CIS is mainly monubiquitinated (37 kDa form) but may also exist in a polyubiquitinated form (45 kDa). [UniProt]

## Images



ARG58431 anti-CISH / Cis 1 antibody IHC-P image

Immunohistochemistry: Paraffin-embedded Human lung cancer stained with ARG58431 anti-CISH / Cis 1 antibody.



ARG58431 anti-CISH / Cis 1 antibody IHC-P image

Immunohistochemistry: Paraffin-embedded Rat kidney stained with ARG58431 anti-CISH / Cis 1 antibody.