

ARG58361
anti-CAMLG antibodyPackage: 100 µl
Store at: -20°C

Summary

Product Description	Rabbit Polyclonal antibody recognizes CAMLG
Tested Reactivity	Hu, Ms, Rat
Tested Application	ICC/IF, IHC-P, WB
Host	Rabbit
Clonality	Polyclonal
Isotype	IgG
Target Name	CAMLG
Species	Human
Immunogen	Recombinant fusion protein corresponding to aa. 1-190 of Human CAMLG (NP_001736.1).
Conjugation	Un-conjugated
Alternate Names	Calcium signal-modulating cyclophilin ligand; CAML

Application Instructions

Application table	Application	Dilution
	ICC/IF	1:50 - 1:200
	IHC-P	1:50 - 1:200
	WB	1:500 - 1:2000
Application Note	* The dilutions indicate recommended starting dilutions and the optimal dilutions or concentrations should be determined by the scientist.	
Positive Control	HepG2	
Observed Size	38 kDa	

Properties

Form	Liquid
Purification	Affinity purified.
Buffer	PBS (pH 7.3), 0.02% Sodium azide and 50% Glycerol.
Preservative	0.02% Sodium azide
Stabilizer	50% Glycerol
Storage instruction	For continuous use, store undiluted antibody at 2-8°C for up to a week. For long-term storage, aliquot and store at -20°C. Storage in frost free freezers is not recommended. Avoid repeated freeze/thaw cycles. Suggest spin the vial prior to opening. The antibody solution should be gently mixed before use.

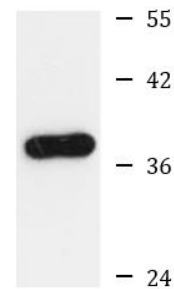
Note

For laboratory research only, not for drug, diagnostic or other use.

Bioinformation

Gene Symbol	CAMLG
Gene Full Name	calcium modulating ligand
Background	The immunosuppressant drug cyclosporin A blocks a calcium-dependent signal from the T-cell receptor (TCR) that normally leads to T-cell activation. When bound to cyclophilin B, cyclosporin A binds and inactivates the key signaling intermediate calcineurin. The protein encoded by this gene functions similarly to cyclosporin A, binding to cyclophilin B and acting downstream of the TCR and upstream of calcineurin by causing an influx of calcium. This integral membrane protein appears to be a new participant in the calcium signal transduction pathway, implicating cyclophilin B in calcium signaling, even in the absence of cyclosporin. [provided by RefSeq, Jul 2008]
Function	Likely involved in the mobilization of calcium as a result of the TCR/CD3 complex interaction. Binds to cyclophilin B. [UniProt]
Calculated Mw	33 kDa
Cellular Localization	Membrane, Multi-pass membrane protein. [UniProt]

Images



HepG2

ARG58361 anti-CAMLG antibody WB image

Western blot: 25 µg of HepG2 cell lysate stained with ARG58361 anti-CAMLG antibody at 1:3000 dilution.