

## ARG58351 anti-ALDH7A1 antibody

Package: 100 µl  
Store at: -20°C

### Summary

Product Description	Rabbit Polyclonal antibody recognizes ALDH7A1
Tested Reactivity	Hu, Ms, Rat
Tested Application	ICC/IF, IHC-P, WB
Host	Rabbit
Clonality	Polyclonal
Isotype	IgG
Target Name	ALDH7A1
Species	Human
Immunogen	Recombinant fusion protein corresponding to aa. 430-539 of Human ALDH7A1 (NP_001173.2).
Conjugation	Un-conjugated
Alternate Names	Alpha-AASA dehydrogenase; P6c dehydrogenase; Alpha-aminoadipic semialdehyde dehydrogenase; Antiquitin-1; ATQ1; EC 1.2.1.8; Delta1-piperideine-6-carboxylate dehydrogenase; Betaine aldehyde dehydrogenase; Aldehyde dehydrogenase family 7 member A1; EC 1.2.1.31; EPD; PDE; EC 1.2.1.3

### Application Instructions

Application table	Application	Dilution
	ICC/IF	1:50 - 1:200
	IHC-P	1:50 - 1:200
	WB	1:1000 - 1:4000
Application Note	* The dilutions indicate recommended starting dilutions and the optimal dilutions or concentrations should be determined by the scientist.	
Positive Control	Rat kidney	
Observed Size	58 kDa	

### Properties

Form	Liquid
Purification	Affinity purified.
Buffer	PBS (pH 7.3), 0.02% Sodium azide and 50% Glycerol.
Preservative	0.02% Sodium azide
Stabilizer	50% Glycerol
Storage instruction	For continuous use, store undiluted antibody at 2-8°C for up to a week. For long-term storage, aliquot and store at -20°C. Storage in frost free freezers is not recommended. Avoid repeated freeze/thaw cycles. Suggest spin the vial prior to opening. The antibody solution should be gently mixed before use.

**Note**

For laboratory research only, not for drug, diagnostic or other use.

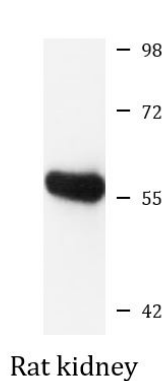
## Bioinformation

---

Gene Symbol	ALDH7A1
Gene Full Name	aldehyde dehydrogenase 7 family, member A1
Background	The protein encoded by this gene is a member of subfamily 7 in the aldehyde dehydrogenase gene family. These enzymes are thought to play a major role in the detoxification of aldehydes generated by alcohol metabolism and lipid peroxidation. This particular member has homology to a previously described protein from the green garden pea, the 26g pea turgor protein. It is also involved in lysine catabolism that is known to occur in the mitochondrial matrix. Recent reports show that this protein is found both in the cytosol and the mitochondria, and the two forms likely arise from the use of alternative translation initiation sites. An additional variant encoding a different isoform has also been found for this gene. Mutations in this gene are associated with pyridoxine-dependent epilepsy. Several related pseudogenes have also been identified. [provided by RefSeq, Jan 2011]
Function	Multifunctional enzyme mediating important protective effects. Metabolizes betaine aldehyde to betaine, an important cellular osmolyte and methyl donor. Protects cells from oxidative stress by metabolizing a number of lipid peroxidation-derived aldehydes. Involved in lysine catabolism. [UniProt]
Calculated Mw	58 kDa
Cellular Localization	Cytoplasm, Mitochondrion, Nucleus, cytosol,. [UniProt]

## Images

---



ARG58351 anti-ALDH7A1 antibody WB image

Western blot: 25 µg of Rat kidney lysate stained with ARG58351 anti-ALDH7A1 antibody at 1:1000 dilution.