

## ARG58344 anti-BCS1L antibody

Package: 100 µl  
Store at: -20°C

### Summary

Product Description	Rabbit Polyclonal antibody recognizes BCS1L
Tested Reactivity	Hu, Ms, Rat
Tested Application	ICC/IF, IHC-P, WB
Host	Rabbit
Clonality	Polyclonal
Isotype	IgG
Target Name	BCS1L
Species	Human
Immunogen	Recombinant fusion protein corresponding to aa. 33-240 of Human BCS1L (NP_004319.1).
Conjugation	Un-conjugated
Alternate Names	BCS1; FLNMS; h-BCS; PTD; GRACILE; BCS1-like protein; BJS; Hs.6719; MC3DN1; Mitochondrial chaperone BCS1; h-BCS1; BCS

### Application Instructions

Application table	Application	Dilution
	ICC/IF	1:50 - 1:200
	IHC-P	1:50 - 1:200
	WB	1:500 - 1:2000
Application Note	* The dilutions indicate recommended starting dilutions and the optimal dilutions or concentrations should be determined by the scientist.	
Observed Size	48 kDa	

### Properties

Form	Liquid
Purification	Affinity purified.
Buffer	PBS (pH 7.3), 0.02% Sodium azide and 50% Glycerol.
Preservative	0.02% Sodium azide
Stabilizer	50% Glycerol
Storage instruction	For continuous use, store undiluted antibody at 2-8°C for up to a week. For long-term storage, aliquot and store at -20°C. Storage in frost free freezers is not recommended. Avoid repeated freeze/thaw cycles. Suggest spin the vial prior to opening. The antibody solution should be gently mixed before use.
Note	For laboratory research only, not for drug, diagnostic or other use.

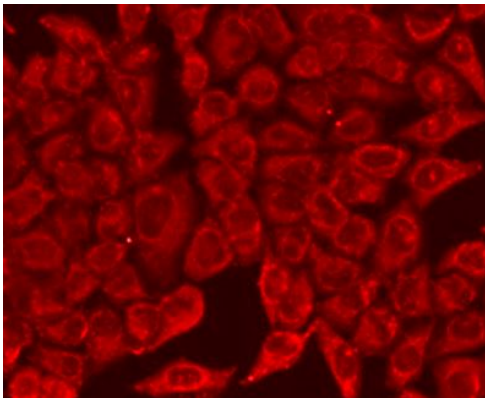
## Bioinformation

---

Gene Symbol	BCS1L
Gene Full Name	BC1 (ubiquinol-cytochrome c reductase) synthesis-like
Background	This gene encodes a homolog of the <i>S. cerevisiae</i> bcs1 protein which is involved in the assembly of complex III of the mitochondrial respiratory chain. The encoded protein does not contain a mitochondrial targeting sequence but experimental studies confirm that it is imported into mitochondria. Mutations in this gene are associated with mitochondrial complex III deficiency and the GRACILE syndrome. Five alternatively spliced transcripts encoding the same protein have been described. [provided by RefSeq, Mar 2012]
Function	Chaperone necessary for the assembly of mitochondrial respiratory chain complex III. Plays an important role in the maintenance of mitochondrial tubular networks, respiratory chain assembly and formation of the LETM1 complex. [UniProt]
Calculated Mw	48 kDa
Cellular Localization	Mitochondrion inner membrane, Single-pass membrane protein. [UniProt]

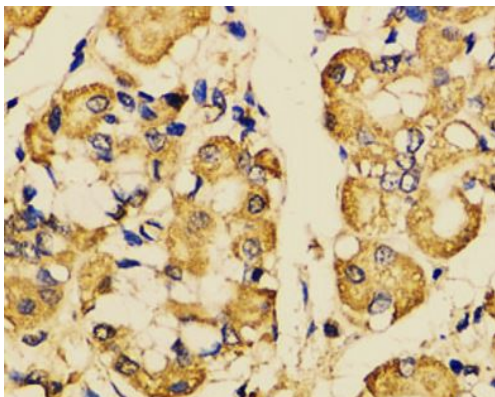
## Images

---



ARG58344 anti-BCS1L antibody ICC/IF image

Immunofluorescence: U2OS cells stained with ARG58344 anti-BCS1L antibody at 1:100 dilution.



ARG58344 anti-BCS1L antibody IHC-P image

Immunohistochemistry: Paraffin-embedded Human stomach stained with ARG58344 anti-BCS1L antibody at 1:100 dilution.