

ARG58330 anti-UQCRC1 antibody

Package: 100 µl
Store at: -20°C

Summary

| | |
|---------------------|--|
| Product Description | Rabbit Polyclonal antibody recognizes UQCRC1 |
| Tested Reactivity | Hu, Ms, Rat |
| Tested Application | ICC/IF, IHC-P, WB |
| Host | Rabbit |
| Clonality | Polyclonal |
| Isotype | IgG |
| Target Name | UQCRC1 |
| Species | Human |
| Immunogen | Recombinant fusion protein corresponding to aa. 156-480 of Human UQCRC1 (NP_003356.2). |
| Conjugation | Un-conjugated |
| Alternate Names | Complex III subunit 1; Core protein I; Ubiquinol-cytochrome-c reductase complex core protein 1; D3S3191; QCR1; Cytochrome b-c1 complex subunit 1, mitochondrial; UQCR1 |

Application Instructions

| Application table | Application | Dilution |
|-------------------|--|----------------|
| | ICC/IF | 1:50 - 1:200 |
| | IHC-P | 1:50 - 1:200 |
| | WB | 1:500 - 1:2000 |
| Application Note | * The dilutions indicate recommended starting dilutions and the optimal dilutions or concentrations should be determined by the scientist. | |
| Observed Size | 53 kDa | |

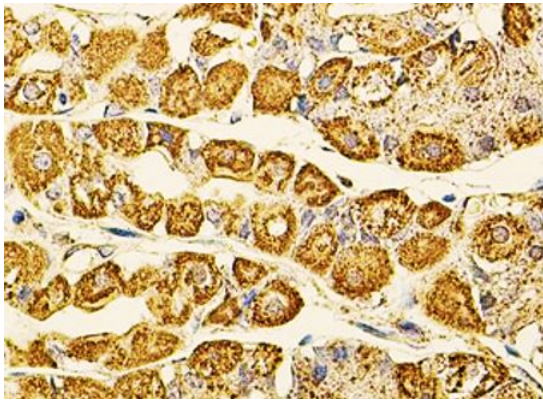
Properties

| | |
|---------------------|---|
| Form | Liquid |
| Purification | Affinity purified. |
| Buffer | PBS (pH 7.3), 0.02% Sodium azide and 50% Glycerol. |
| Preservative | 0.02% Sodium azide |
| Stabilizer | 50% Glycerol |
| Storage instruction | For continuous use, store undiluted antibody at 2-8°C for up to a week. For long-term storage, aliquot and store at -20°C. Storage in frost free freezers is not recommended. Avoid repeated freeze/thaw cycles. Suggest spin the vial prior to opening. The antibody solution should be gently mixed before use. |
| Note | For laboratory research only, not for drug, diagnostic or other use. |

Bioinformation

| | |
|-----------------------|---|
| Gene Symbol | UQCRC1 |
| Gene Full Name | ubiquinol-cytochrome c reductase core protein I |
| Function | This is a component of the ubiquinol-cytochrome c reductase complex (complex III or cytochrome b-c1 complex), which is part of the mitochondrial respiratory chain. This protein may mediate formation of the complex between cytochromes c and c1. [UniProt] |
| Calculated Mw | 53 kDa |
| Cellular Localization | Mitochondrion inner membrane. [UniProt] |

Images



ARG58330 anti-UQCRC1 antibody IHC-P image

Immunohistochemistry: Paraffin-embedded Human stomach stained with ARG58330 anti-UQCRC1 antibody at 1:100 dilution.