

## ARG58316 anti-ATP2A3 / SERCA3 ATPase antibody

Package: 50 µg  
Store at: -20°C

### Summary

Product Description	Rabbit Polyclonal antibody recognizes ATP2A3 / SERCA3 ATPase
Tested Reactivity	Ms, Rat
Tested Application	IHC-P, WB
Host	Rabbit
Clonality	Polyclonal
Isotype	IgG
Target Name	ATP2A3 / SERCA3 ATPase
Species	Human
Immunogen	Synthetic peptide corresponding to a sequence at the N-terminus of Human ATP2A3(1-30aa MEAAHLLPAADVLRHFSVTAEGGLSPAQVT), different from the related Mouse sequence by five amino acids, and from the related Rat sequence by six amino acids.
Conjugation	Un-conjugated
Alternate Names	SERCA3; SR Ca; Sarcoplasmic/endoplasmic reticulum calcium ATPase 3; EC 3.6.3.8; Calcium pump 3; 2+

### Application Instructions

Application table	Application	Dilution
	IHC-P	0.5 - 1 µg/ml
	WB	0.1 - 0.5 µg/ml
Application Note	IHC-P: Antigen Retrieval: By heat mediation. * The dilutions indicate recommended starting dilutions and the optimal dilutions or concentrations should be determined by the scientist.	

### Properties

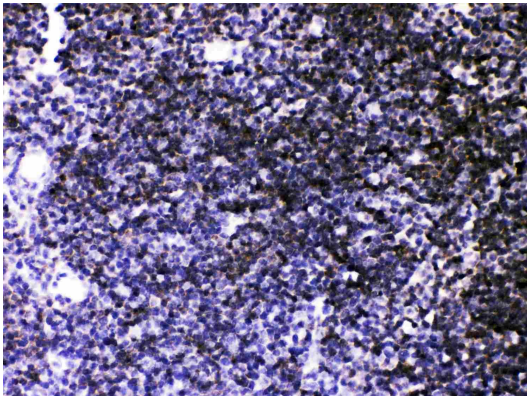
Form	Liquid
Purification	Affinity purification with immunogen.
Buffer	0.9% NaCl, 0.2% Na <sub>2</sub> HPO <sub>4</sub> , 0.05% Sodium azide and 5% BSA.
Preservative	0.05% Sodium azide
Stabilizer	5% BSA
Concentration	0.5 mg/ml
Storage instruction	For continuous use, store undiluted antibody at 2-8°C for up to a week. For long-term storage, aliquot and store at -20°C or below. Storage in frost free freezers is not recommended. Avoid repeated freeze/thaw cycles. Suggest spin the vial prior to opening. The antibody solution should be gently mixed before use.

Note For laboratory research only, not for drug, diagnostic or other use.

## Bioinformation

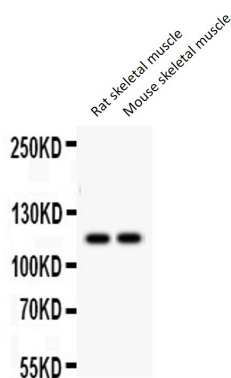
Gene Symbol	ATP2A3
Gene Full Name	ATPase, Ca <sup>++</sup> transporting, ubiquitous
Background	This gene encodes one of the SERCA Ca(2+)-ATPases, which are intracellular pumps located in the sarcoplasmic or endoplasmic reticula of muscle cells. This enzyme catalyzes the hydrolysis of ATP coupled with the translocation of calcium from the cytosol to the sarcoplasmic reticulum lumen, and is involved in calcium sequestration associated with muscular excitation and contraction. Alternative splicing results in multiple transcript variants encoding different isoforms. [provided by RefSeq, Jul 2008]
Function	This magnesium-dependent enzyme catalyzes the hydrolysis of ATP coupled with the transport of calcium. Transports calcium ions from the cytosol into the sarcoplasmic/endoplasmic reticulum lumen. Contributes to calcium sequestration involved in muscular excitation/contraction. [UniProt]
Calculated Mw	114 kDa
Cellular Localization	Nucleus membrane; Multi-pass membrane protein. Endoplasmic reticulum membrane; Multi-pass membrane protein. Sarcoplasmic reticulum membrane; Multi-pass membrane protein. [UniProt]

## Images



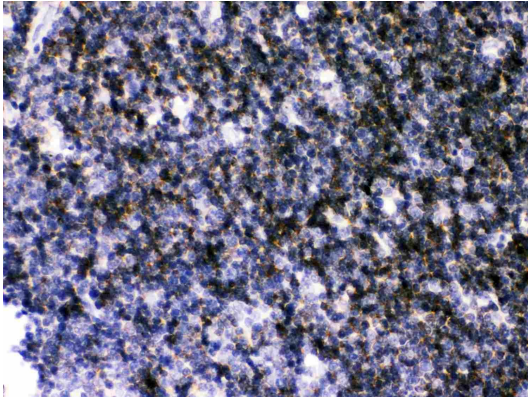
ARG58316 anti-ATP2A3 / SERCA3 ATPase antibody IHC-P image

Immunohistochemistry: Paraffin-embedded Mouse thymus stained with ARG58316 anti-ATP2A3 / SERCA3 ATPase antibody.



ARG58316 anti-ATP2A3 / SERCA3 ATPase antibody WB image

Western blot: 50 µg of Rat skeletal muscle and Mouse skeletal muscle lysates stained with ARG58316 anti-ATP2A3 / SERCA3 ATPase antibody at 0.5 µg/ml dilution.



ARG58316 anti-ATP2A3 / SERCA3 ATPase antibody IHC-P image

Immunohistochemistry: Paraffin-embedded Rat thymus stained with ARG58316 anti-ATP2A3 / SERCA3 ATPase antibody.