

ARG58303 anti-BCAT2 antibody

Package: 50 µg
Store at: -20°C

Summary

Product Description	Rabbit Polyclonal antibody recognizes BCAT2
Tested Reactivity	Hu
Tested Application	IHC-P, WB
Host	Rabbit
Clonality	Polyclonal
Isotype	IgG
Target Name	BCAT2
Species	Human
Immunogen	Synthetic peptide corresponding to a sequence at the C-terminus of Human BCAT2(377-392aa KEIQYGIRAHWMPV).
Conjugation	Un-conjugated
Alternate Names	EC 2.6.1.42; BCAM; Placental protein 18; BCT2; m; PP18; BCATM; Branched-chain-amino-acid aminotransferase, mitochondrial; BCAT

Application Instructions

Application table	Application	Dilution
	IHC-P	0.5 - 1 µg/ml
	WB	0.1 - 0.5 µg/ml
Application Note	IHC-P: Antigen Retrieval: By heat mediation. * The dilutions indicate recommended starting dilutions and the optimal dilutions or concentrations should be determined by the scientist.	

Properties

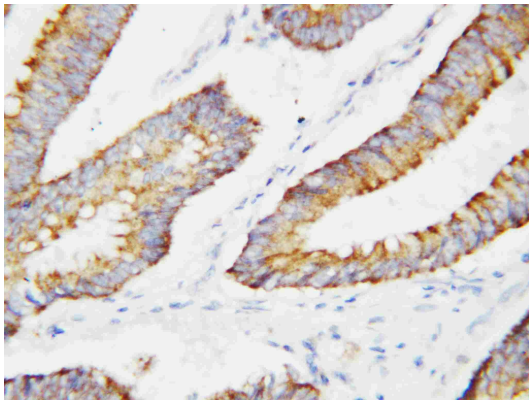
Form	Liquid
Purification	Affinity purification with immunogen.
Buffer	0.9% NaCl, 0.2% Na ₂ HPO ₄ , 0.05% Thimerosal, 0.05% Sodium azide and 5% BSA.
Preservative	0.05% Thimerosal and 0.05% Sodium azide
Stabilizer	5% BSA
Concentration	0.5 mg/ml
Storage instruction	For continuous use, store undiluted antibody at 2-8°C for up to a week. For long-term storage, aliquot and store at -20°C or below. Storage in frost free freezers is not recommended. Avoid repeated freeze/thaw cycles. Suggest spin the vial prior to opening. The antibody solution should be gently mixed before use.

Note For laboratory research only, not for drug, diagnostic or other use.

Bioinformation

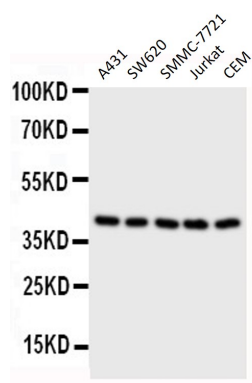
Gene Symbol	BCAT2
Gene Full Name	branched chain amino-acid transaminase 2, mitochondrial
Background	This gene encodes a branched chain aminotransferase found in mitochondria. The encoded protein forms a dimer that catalyzes the first step in the production of the branched chain amino acids leucine, isoleucine, and valine. Multiple transcript variants encoding different isoforms have been found for this gene. [provided by RefSeq, Sep 2009]
Function	Catalyzes the first reaction in the catabolism of the essential branched chain amino acids leucine, isoleucine, and valine. May also function as a transporter of branched chain alpha-keto acids. [UniProt]
Calculated Mw	44 kDa
Cellular Localization	Isoform A: Mitochondrion. [UniProt]

Images



ARG58303 anti-BCAT2 antibody IHC-P image

Immunohistochemistry: Paraffin-embedded Human colon cancer stained with ARG58303 anti-BCAT2 antibody.



ARG58303 anti-BCAT2 antibody WB image

Western blot: 40 µg of A431 whole cell lysate, SW620 whole cell lysate, SMMC-7721 whole cell lysate, Jurkat whole cell lysate and CEM whole cell lysate stained with ARG58303 anti-BCAT2 antibody at 0.5 µg/ml dilution.