

## ARG58291 anti-Bcl 2A1 antibody

Package: 50 µg  
Store at: -20°C

### Summary

Product Description	Rabbit Polyclonal antibody recognizes Bcl 2A1
Tested Reactivity	Hu, Ms
Tested Application	IHC-P, WB
Specificity	At least two isoforms of Bcl2A1 are known to exist; this antibody will only detect the larger isoform.
Host	Rabbit
Clonality	Polyclonal
Isotype	IgG
Target Name	Bcl 2A1
Species	Human
Immunogen	Synthetic peptide corresponding to 14 aa (C-terminus) of Human Bcl2A1.
Conjugation	Un-conjugated
Alternate Names	BCL2L5; GRS; HBPA1; Bcl-2-like protein 5; Bcl-2-related protein A1; BFL1; Bcl2-L-5; Hemopoietic-specific early response protein; ACC-1; Protein GRS; ACC-2; ACC1; Protein BFL-1; ACC2

### Application Instructions

Application table	Application	Dilution
	IHC-P	10 µg/ml
	WB	0.5 - 2 µg/ml
Application Note	* The dilutions indicate recommended starting dilutions and the optimal dilutions or concentrations should be determined by the scientist.	
Positive Control	Human kidney	
Observed Size	29 kDa	

### Properties

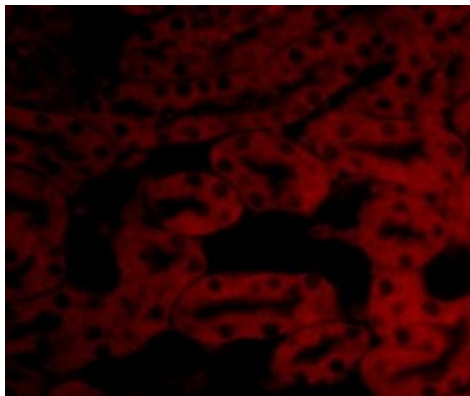
Form	Liquid
Purification	Affinity purification with immunogen.
Buffer	PBS and 0.02% Sodium azide
Preservative	0.02% Sodium azide
Concentration	1 mg/ml
Storage instruction	For continuous use, store undiluted antibody at 2-8°C for up to a week. For long-term storage, aliquot and store at -20°C or below. Storage in frost free freezers is not recommended. Avoid repeated freeze/thaw cycles. Suggest spin the vial prior to opening. The antibody solution should be gently mixed before use.

## Bioinformation

---

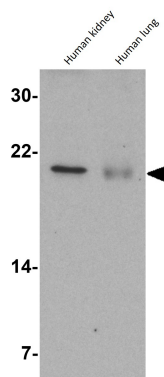
Gene Symbol	BCL2A1
Gene Full Name	BCL2-related protein A1
Background	This gene encodes a member of the BCL-2 protein family. The proteins of this family form hetero- or homodimers and act as anti- and pro-apoptotic regulators that are involved in a wide variety of cellular activities such as embryonic development, homeostasis and tumorigenesis. The protein encoded by this gene is able to reduce the release of pro-apoptotic cytochrome c from mitochondria and block caspase activation. This gene is a direct transcription target of NF-kappa B in response to inflammatory mediators, and is up-regulated by different extracellular signals, such as granulocyte-macrophage colony-stimulating factor (GM-CSF), CD40, phorbol ester and inflammatory cytokine TNF and IL-1, which suggests a cytoprotective function that is essential for lymphocyte activation as well as cell survival. Alternatively spliced transcript variants encoding different isoforms have been found for this gene. [provided by RefSeq, Jul 2008]
Function	Retards apoptosis induced by IL-3 deprivation. May function in the response of hemopoietic cells to external signals and in maintaining endothelial survival during infection (By similarity). Can inhibit apoptosis induced by serum starvation in the mammary epithelial cell line HC11 (By similarity). [UniProt]
Calculated Mw	20 kDa

## Images



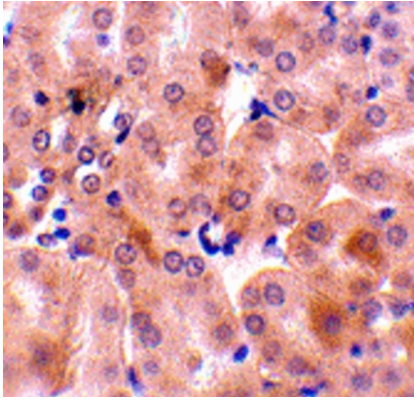
ARG58291 anti-Bcl 2A1 antibody IHC image

Immunohistochemistry: Mouse kidney tissue stained with ARG58291 anti-Bcl 2A1 antibody at 20 µg/ml dilution.



ARG58291 anti-Bcl 2A1 antibody WB image

Western blot: Human kidney and Human lung tissue lysates stained with ARG58291 anti-Bcl 2A1 antibody at 1 µg/ml dilution.



ARG58291 anti-Bcl 2A1 antibody IHC-P image

Immunohistochemistry: Mouse kidney tissue stained with ARG58291 anti-Bcl 2A1 antibody at 10 µg/ml dilution.