

ARG58281 anti-UQCRC1 antibody

Package: 100 µl
Store at: -20°C

Summary

Product Description	Rabbit Polyclonal antibody recognizes UQCRC1
Tested Reactivity	Hu
Predict Reactivity	Ms, Rat
Tested Application	WB
Host	Rabbit
Clonality	Polyclonal
Isotype	IgG
Target Name	UQCRC1
Species	Human
Immunogen	KLH-conjugated synthetic peptide corresponding to aa. 141-170 (N-terminus) of Human UQCRC1.
Conjugation	Un-conjugated
Alternate Names	Complex III subunit 1; Core protein I; Ubiquinol-cytochrome-c reductase complex core protein 1; D3S3191; QCR1; Cytochrome b-c1 complex subunit 1, mitochondrial; UQCR1

Application Instructions

Application table	Application	Dilution
	WB	1:1000
Application Note	* The dilutions indicate recommended starting dilutions and the optimal dilutions or concentrations should be determined by the scientist.	
Positive Control	WiDr	

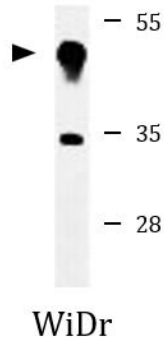
Properties

Form	Liquid
Purification	Purification with Protein A and immunogen peptide.
Buffer	PBS and 0.09% (W/V) Sodium azide.
Preservative	0.09% (W/V) Sodium azide.
Storage instruction	For continuous use, store undiluted antibody at 2-8°C for up to a week. For long-term storage, aliquot and store at -20°C or below. Storage in frost free freezers is not recommended. Avoid repeated freeze/thaw cycles. Suggest spin the vial prior to opening. The antibody solution should be gently mixed before use.
Note	For laboratory research only, not for drug, diagnostic or other use.

Bioinformation

Gene Symbol	UQCRC1
Gene Full Name	ubiquinol-cytochrome c reductase core protein I
Function	This is a component of the ubiquinol-cytochrome c reductase complex (complex III or cytochrome b-c1 complex), which is part of the mitochondrial respiratory chain. This protein may mediate formation of the complex between cytochromes c and c1. [UniProt]
Calculated Mw	53 kDa
Cellular Localization	Mitochondrion inner membrane. [UniProt]

Images



ARG58281 anti-UQCRC1 antibody WB image

Western blot: 35 μ g of WiDr cell lysate stained with ARG58281 anti-UQCRC1 antibody.