

ARG58246 anti-GLP1 Receptor antibody

Package: 100 µl
Store at: -20°C

Summary

Product Description	Rabbit Polyclonal antibody recognizes GLP1 Receptor
Tested Reactivity	Ms, Rat
Tested Application	ICC/IF, WB
Host	Rabbit
Clonality	Polyclonal
Isotype	IgG
Target Name	GLP1 Receptor
Species	Human
Immunogen	Recombinant fusion protein corresponding to aa. 22-116 of Human GLP1 Receptor (NP_002053.3).
Conjugation	Un-conjugated
Alternate Names	GLP-1 receptor; GLP-1-R; Glucagon-like peptide 1 receptor; GLP-1R

Application Instructions

Application table	Application	Dilution
	ICC/IF	1:50 - 1:200
	WB	1:500 - 1:2000
Application Note	* The dilutions indicate recommended starting dilutions and the optimal dilutions or concentrations should be determined by the scientist.	
Positive Control	Mouse lung	
Observed Size	53 kDa	

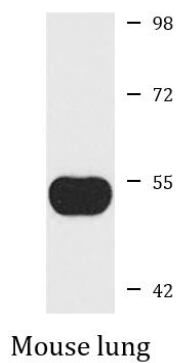
Properties

Form	Liquid
Purification	Affinity purified.
Buffer	PBS (pH 7.3), 0.02% Sodium azide and 50% Glycerol.
Preservative	0.02% Sodium azide
Stabilizer	50% Glycerol
Storage instruction	For continuous use, store undiluted antibody at 2-8°C for up to a week. For long-term storage, aliquot and store at -20°C. Storage in frost free freezers is not recommended. Avoid repeated freeze/thaw cycles. Suggest spin the vial prior to opening. The antibody solution should be gently mixed before use.
Note	For laboratory research only, not for drug, diagnostic or other use.

Bioinformation

Gene Symbol	GLP1R
Gene Full Name	glucagon-like peptide 1 receptor
Function	This is a receptor for glucagon-like peptide 1. The activity of this receptor is mediated by G proteins which activate adenylyl cyclase. [UniProt]
Calculated Mw	53 kDa
PTM	N-glycosylation enhances cell surface expression and lengthens receptor half-life by preventing degradation in the ER. [UniProt]
Cellular Localization	Cell membrane, Multi-pass membrane protein. [UniProt]

Images



ARG58246 anti-GLP1 Receptor antibody WB image

Western blot: 25 µg of Mouse lung lysate stained with ARG58246 anti-GLP1 Receptor antibody at 1:1000 dilution.