

ARG58232
anti-ALPPL2 antibodyPackage: 100 µl
Store at: -20°C

Summary

Product Description	Rabbit Polyclonal antibody recognizes ALPPL2
Tested Reactivity	Hu, Ms
Tested Application	WB
Host	Rabbit
Clonality	Polyclonal
Isotype	IgG
Target Name	ALPPL2
Species	Human
Immunogen	Recombinant fusion protein corresponding to aa. 20-280 of Human ALPPL2 (NP_112603.2).
Conjugation	Un-conjugated
Alternate Names	Alkaline phosphatase, placental-like; Placental alkaline phosphatase-like; PLAP-like; EC 3.1.3.1; Germ cell alkaline phosphatase; ALPG; Alkaline phosphatase Nagao isozyme; ALP-1; ALPPL; GCAP

Application Instructions

Application table	Application	Dilution
	WB	1:500 - 1:2000
Application Note	* The dilutions indicate recommended starting dilutions and the optimal dilutions or concentrations should be determined by the scientist.	
Positive Control	HeLa	
Observed Size	70 kDa	

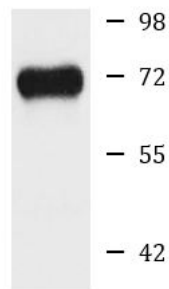
Properties

Form	Liquid
Purification	Affinity purified.
Buffer	PBS (pH 7.3), 0.02% Sodium azide and 50% Glycerol.
Preservative	0.02% Sodium azide
Stabilizer	50% Glycerol
Storage instruction	For continuous use, store undiluted antibody at 2-8°C for up to a week. For long-term storage, aliquot and store at -20°C. Storage in frost free freezers is not recommended. Avoid repeated freeze/thaw cycles. Suggest spin the vial prior to opening. The antibody solution should be gently mixed before use.
Note	For laboratory research only, not for drug, diagnostic or other use.

Bioinformation

Gene Symbol	ALPPL2
Gene Full Name	alkaline phosphatase, placental-like 2
Background	There are at least four distinct but related alkaline phosphatases: intestinal, placental, placental-like, and liver/bone/kidney (tissue non-specific). The product of this gene is a membrane bound glycosylated enzyme, localized to testis, thymus and certain germ cell tumors, that is closely related to both the placental and intestinal forms of alkaline phosphatase. [provided by RefSeq, Jul 2008]
Calculated Mw	57 kDa
Cellular Localization	Cell membrane, Lipid-anchor, GPI-anchor. [UniProt]

Images



HeLa

ARG58232 anti-ALPPL2 antibody WB image

Western blot: 25 µg of HeLa cell lysate stained with ARG58232 anti-ALPPL2 antibody at 1:1000 dilution.