

ARG58162 anti-Phospholipase C beta 1 antibody

Package: 100 µl

Store at: -20°C

Summary

Product Description	Rabbit Polyclonal antibody recognizes Phospholipase C beta 1
Tested Reactivity	Hu, Ms, Rat
Tested Application	IHC-P, WB
Host	Rabbit
Clonality	Polyclonal
Isotype	IgG
Target Name	Phospholipase C beta 1
Species	Human
Immunogen	Recombinant fusion protein corresponding to aa. 917-1216 of Human Phospholipase C beta 1 (NP_056007.1).
Conjugation	Un-conjugated
Alternate Names	EC 3.1.4.11; EIEE12; PLCB1B; PLC154; PLCB1A; Phospholipase C-I; PLC-I; Phosphoinositide phospholipase C-beta-1; Phospholipase C-beta-1; PLC-154; 1-phosphatidylinositol 4,5-bisphosphate phosphodiesterase beta-1; PI-PLC; PLC-beta-1

Application Instructions

Application table	Application	Dilution
	IHC-P	1:50 - 1:200
	WB	1:500 - 1:2000
Application Note	* The dilutions indicate recommended starting dilutions and the optimal dilutions or concentrations should be determined by the scientist.	
Positive Control	NCI-H460	
Observed Size	145 kDa	

Properties

Form	Liquid
Purification	Affinity purified.
Buffer	PBS (pH 7.3), 0.02% Sodium azide and 50% Glycerol.
Preservative	0.02% Sodium azide
Stabilizer	50% Glycerol
Storage instruction	For continuous use, store undiluted antibody at 2-8°C for up to a week. For long-term storage, aliquot and store at -20°C. Storage in frost free freezers is not recommended. Avoid repeated freeze/thaw cycles. Suggest spin the vial prior to opening. The antibody solution should be gently mixed before use.

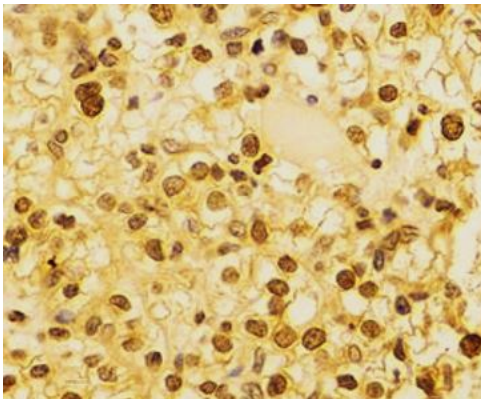
Note

For laboratory research only, not for drug, diagnostic or other use.

Bioinformation

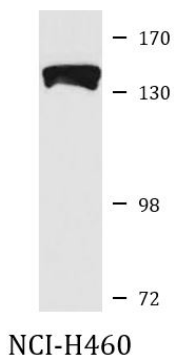
Gene Symbol	PLCB1
Gene Full Name	phospholipase C, beta 1 (phosphoinositide-specific)
Background	The protein encoded by this gene catalyzes the formation of inositol 1,4,5-trisphosphate and diacylglycerol from phosphatidylinositol 4,5-bisphosphate. This reaction uses calcium as a cofactor and plays an important role in the intracellular transduction of many extracellular signals. This gene is activated by two G-protein alpha subunits, alpha-q and alpha-11. Two transcript variants encoding different isoforms have been found for this gene. [provided by RefSeq, Jul 2008]
Function	The production of the second messenger molecules diacylglycerol (DAG) and inositol 1,4,5-trisphosphate (IP3) is mediated by activated phosphatidylinositol-specific phospholipase C enzymes. [UniProt]
Calculated Mw	139 kDa
Cellular Localization	Nucleus membrane, Cytoplasm. [UniProt]

Images



ARG58162 anti-Phospholipase C beta 1 antibody IHC-P image

Immunohistochemistry: Paraffin-embedded Human kidney stained with ARG58162 anti-Phospholipase C beta 1 antibody at 1:100 dilution.



ARG58162 anti-Phospholipase C beta 1 antibody WB image

Western blot: 25 µg of NCI-H460 cell lysate stained with ARG58162 anti-Phospholipase C beta 1 antibody at 1:1000 dilution.