

ARG58125 anti-TIMP3 antibody

Package: 50 µg
Store at: -20°C

Summary

| | |
|---------------------|--|
| Product Description | Rabbit Polyclonal antibody recognizes TIMP3 |
| Tested Reactivity | Hu |
| Tested Application | IHC-P |
| Host | Rabbit |
| Clonality | Polyclonal |
| Isotype | IgG |
| Target Name | TIMP3 |
| Species | Human |
| Immunogen | Synthetic peptide corresponding to aa. 175-211 of Human TIMP3. |
| Conjugation | Un-conjugated |
| Alternate Names | HSMRK222; K222TA2; TIMP-3; Protein MIG-5; K222; SFD; Metalloproteinase inhibitor 3; Tissue inhibitor of metalloproteinases 3 |

Application Instructions

| Application table | Application | Dilution |
|-------------------|---|-------------|
| | IHC-P | 1 - 2 µg/ml |
| Application Note | IHC-P: Antigen Retrieval: Boil tissue section in 10mM Citrate buffer (pH 6.0) for 10-20 min followed by cooling at RT for 20 min. * The dilutions indicate recommended starting dilutions and the optimal dilutions or concentrations should be determined by the scientist. | |

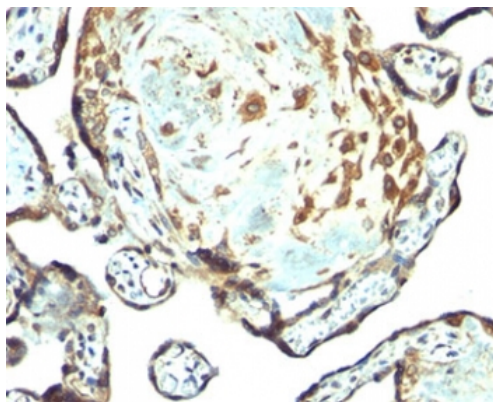
Properties

| | |
|---------------------|--|
| Form | Liquid |
| Purification | Purification with Protein A. |
| Buffer | PBS (pH 7.4) |
| Concentration | 0.2 mg/ml |
| Storage instruction | For continuous use, store undiluted antibody at 2-8°C for up to a week. For long-term storage, aliquot and store at -20°C or below. Storage in frost free freezers is not recommended. Avoid repeated freeze/thaw cycles. Suggest spin the vial prior to opening. The antibody solution should be gently mixed before use. |
| Note | For laboratory research only, not for drug, diagnostic or other use. |

Bioinformation

| | |
|-----------------------|---|
| Gene Symbol | TIMP3 |
| Gene Full Name | TIMP metalloproteinase inhibitor 3 |
| Background | This gene belongs to the TIMP gene family. The proteins encoded by this gene family are inhibitors of the matrix metalloproteinases, a group of peptidases involved in degradation of the extracellular matrix (ECM). Expression of this gene is induced in response to mitogenic stimulation and this netrin domain-containing protein is localized to the ECM. Mutations in this gene have been associated with the autosomal dominant disorder Sorsby's fundus dystrophy. [provided by RefSeq, Jul 2008] |
| Function | Complexes with metalloproteinases (such as collagenases) and irreversibly inactivates them by binding to their catalytic zinc cofactor. May form part of a tissue-specific acute response to remodeling stimuli. Known to act on MMP-1, MMP-2, MMP-3, MMP-7, MMP-9, MMP-13, MMP-14 and MMP-15. [UniProt] |
| Calculated Mw | 24 kDa |
| Cellular Localization | Cytoplasmic. [UniProt] |

Images



ARG58125 anti-TIMP3 antibody IHC-P image

Immunohistochemistry: Paraffin-embedded Human placenta tissue stained with ARG58125 anti-TIMP3 antibody.
