

ARG58046 anti-FLI1 antibody

Package: 100 µl
Store at: -20°C

Summary

Product Description	Rabbit Polyclonal antibody recognizes FLI1
Tested Reactivity	Hu, Ms
Tested Application	IHC-P, WB
Host	Rabbit
Clonality	Polyclonal
Isotype	IgG
Target Name	FLI1
Species	Human
Immunogen	Synthetic peptide derived from Human FLI1.
Conjugation	Un-conjugated
Alternate Names	SIC-1; Friend leukemia integration 1 transcription factor; Proto-oncogene Fli-1; EWSR2; Transcription factor ERGB

Application Instructions

Application table	Application	Dilution
	IHC-P	1:100 - 1:500
	WB	1:500 - 1:2000
Application Note	* The dilutions indicate recommended starting dilutions and the optimal dilutions or concentrations should be determined by the scientist.	
Positive Control	Jurkat	
Observed Size	~ 51 kDa	

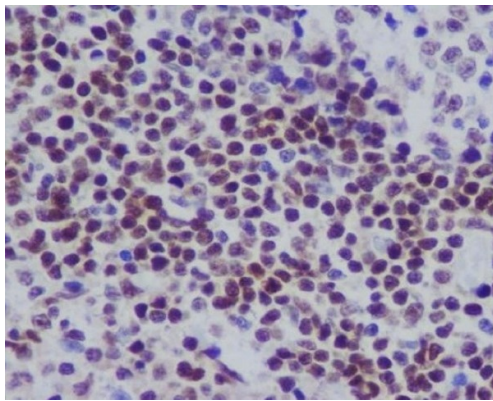
Properties

Form	Liquid
Purification	Affinity purified.
Buffer	PBS (pH 7.4), 0.02% Sodium azide and 50% Glycerol.
Preservative	0.02% Sodium azide
Stabilizer	50% Glycerol
Storage instruction	For continuous use, store undiluted antibody at 2-8°C for up to a week. For long-term storage, aliquot and store at -20°C. Storage in frost free freezers is not recommended. Avoid repeated freeze/thaw cycles. Suggest spin the vial prior to opening. The antibody solution should be gently mixed before use.
Note	For laboratory research only, not for drug, diagnostic or other use.

Bioinformation

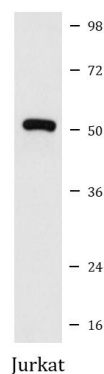
Gene Symbol	FLI1
Gene Full Name	Fli-1 proto-oncogene, ETS transcription factor
Background	This gene encodes a transcription factor containing an ETS DNA-binding domain. The gene can undergo a t(11;22)(q24;q12) translocation with the Ewing sarcoma gene on chromosome 22, which results in a fusion gene that is present in the majority of Ewing sarcoma cases. An acute lymphoblastic leukemia-associated t(4;11)(q21;q23) translocation involving this gene has also been identified. Alternative splicing results in multiple transcript variants. [provided by RefSeq, Aug 2012]
Function	Sequence-specific transcriptional activator. Recognizes the DNA sequence 5'-C[CA]GGAAGT-3'. [UniProt]
Calculated Mw	51 kDa
Cellular Localization	Nucleus. [UniProt]

Images



ARG58046 anti-FLI1 antibody IHC-P image

Immunohistochemistry: Paraffin-embedded Human tonsil stained with ARG58046 anti-FLI1 antibody.



ARG58046 anti-FLI1 antibody WB image

Western blot: Jurkat cell lysate stained with ARG58046 anti-FLI1 antibody.