

ARG58032 anti-GCLC antibody

Package: 50 µg
Store at: -20°C

Summary

| | |
|---------------------|--|
| Product Description | Rabbit Polyclonal antibody recognizes GCLC |
| Tested Reactivity | Hu, Rat |
| Tested Application | IHC-P, WB |
| Host | Rabbit |
| Clonality | Polyclonal |
| Isotype | IgG |
| Target Name | GCLC |
| Species | Human |
| Immunogen | Partial recombinant protein corresponding to aa. 437-637 of Human GCLC. |
| Conjugation | Un-conjugated |
| Alternate Names | GCS heavy chain; Gamma-glutamylcysteine synthetase; Gamma-ECS; GCL; GLCL; GCS; Glutamate--cysteine ligase catalytic subunit; EC 6.3.2.2; GLCLC |

Application Instructions

| Application table | Application | Dilution |
|-------------------|--|---------------|
| | IHC-P | 1 - 5 µg/ml |
| | WB | 0.5 - 1 µg/ml |
| Application Note | * The dilutions indicate recommended starting dilutions and the optimal dilutions or concentrations should be determined by the scientist. | |
| Observed Size | ~ 72 kDa | |

Properties

| | |
|---------------------|--|
| Form | Liquid |
| Purification | Affinity purification with immunogen. |
| Buffer | PBS, 0.025% Sodium azide and 2.5% BSA. |
| Preservative | 0.025% Sodium azide |
| Stabilizer | 2.5% BSA |
| Concentration | 0.5 mg/ml |
| Storage instruction | For continuous use, store undiluted antibody at 2-8°C for up to a week. For long-term storage, aliquot and store at -20°C or below. Storage in frost free freezers is not recommended. Avoid repeated freeze/thaw cycles. Suggest spin the vial prior to opening. The antibody solution should be gently mixed before use. |

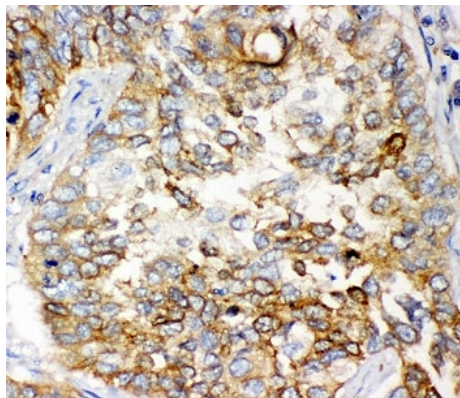
Note

For laboratory research only, not for drug, diagnostic or other use.

Bioinformation

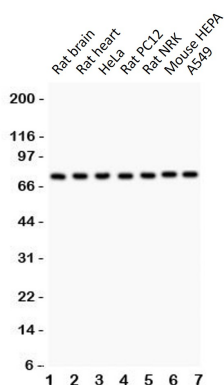
| | |
|----------------|--|
| Gene Symbol | GCLC |
| Gene Full Name | glutamate-cysteine ligase, catalytic subunit |
| Background | Glutamate-cysteine ligase, also known as gamma-glutamylcysteine synthetase is the first rate-limiting enzyme of glutathione synthesis. The enzyme consists of two subunits, a heavy catalytic subunit and a light regulatory subunit. This locus encodes the catalytic subunit, while the regulatory subunit is derived from a different gene located on chromosome 1p22-p21. Mutations at this locus have been associated with hemolytic anemia due to deficiency of gamma-glutamylcysteine synthetase and susceptibility to myocardial infarction.[provided by RefSeq, Oct 2010] |
| Calculated Mw | 73 kDa |

Images



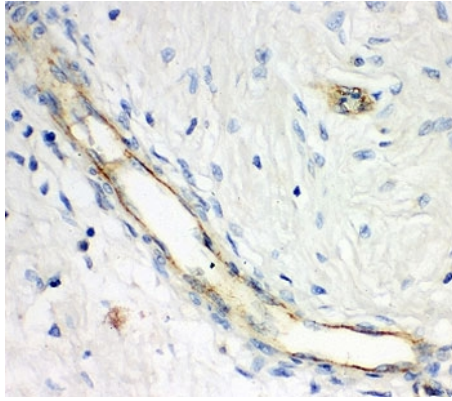
ARG58032 anti-GCLC antibody IHC-P image

Immunohistochemistry: Paraffin-embedded Human lung cancer tissue stained with ARG58032 anti-GCLC antibody.



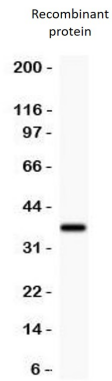
ARG58032 anti-GCLC antibody WB image

Western blot: 1) Rat brain, 2) Rat heart, 3) HeLa, 4) Rat PC12, 5) Rat NRK, 6) Mouse HEPA and 7) A549 cell lysates stained with ARG58032 anti-GCLC antibody.



ARG58032 anti-GCLC antibody IHC-P image

Immunohistochemistry: Paraffin-embedded Human breast cancer tissue stained with ARG58032 anti-GCLC antibody.



ARG58032 anti-GCLC antibody WB image

Western blot: 0.5 ng of recombinant Human protein stained with ARG58032 anti-GCLC antibody.