

ARG58021 anti-DRD5 / Dopamine Receptor D5 antibody

Package: 50 µg
Store at: -20°C

Summary

Product Description	Rabbit Polyclonal antibody recognizes DRD5 / Dopamine Receptor D5
Tested Reactivity	Hu, Ms, Rat
Tested Application	WB
Host	Rabbit
Clonality	Polyclonal
Isotype	IgG
Target Name	DRD5 / Dopamine Receptor D5
Species	Mouse
Immunogen	Synthetic peptide around the C-terminus of Mouse Dopamine Receptor D5. (LISYNQDVFHREIAAAYVH)
Conjugation	Un-conjugated
Alternate Names	DBDR; DRD1B; DRD1L2; D(1B) dopamine receptor; D(5) dopamine receptor; D1beta dopamine receptor; Dopamine D5 receptor

Application Instructions

Application table	Application	Dilution
	WB	0.5 - 1 µg/ml
Application Note	* The dilutions indicate recommended starting dilutions and the optimal dilutions or concentrations should be determined by the scientist.	

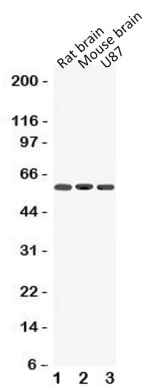
Properties

Form	Liquid
Purification	Affinity purification with immunogen.
Buffer	PBS, 0.025% Sodium azide and 2.5% BSA.
Preservative	0.025% Sodium azide
Stabilizer	2.5% BSA
Concentration	0.5 mg/ml
Storage instruction	For continuous use, store undiluted antibody at 2-8°C for up to a week. For long-term storage, aliquot and store at -20°C or below. Storage in frost free freezers is not recommended. Avoid repeated freeze/thaw cycles. Suggest spin the vial prior to opening. The antibody solution should be gently mixed before use.
Note	For laboratory research only, not for drug, diagnostic or other use.

Bioinformation

Gene Symbol	DRD5
Gene Full Name	dopamine receptor D5
Background	This gene encodes the D5 subtype of the dopamine receptor. The D5 subtype is a G-protein coupled receptor which stimulates adenylyl cyclase. This receptor is expressed in neurons in the limbic regions of the brain. It has a 10-fold higher affinity for dopamine than the D1 subtype. Pseudogenes related to this gene reside on chromosomes 1 and 2. [provided by RefSeq, Jul 2008]
Function	Dopamine receptor whose activity is mediated by G proteins which activate adenylyl cyclase. [UniProt]
Calculated Mw	53 kDa

Images



ARG58021 anti-DRD5 / Dopamine Receptor D5 antibody WB image

Western blot: 1) Rat brain, 2) Mouse brain and 3) U87 cell lysates stained with ARG58021 anti-DRD5 / Dopamine Receptor D5 antibody.