

ARG57984 anti-MMP25 antibody

Package: 100 µl
Store at: -20°C

Summary

Product Description	Rabbit Polyclonal antibody recognizes MMP25
Tested Reactivity	Hu, Ms, Rat
Tested Application	ICC/IF, IHC-P, WB
Host	Rabbit
Clonality	Polyclonal
Isotype	IgG
Target Name	MMP25
Species	Human
Immunogen	Recombinant fusion protein corresponding to aa. 350-540 of Human MMP25 (NP_071913.1).
Conjugation	Un-conjugated
Alternate Names	Membrane-type-6 matrix metalloproteinase; Membrane-type matrix metalloproteinase 6; EC 3.4.24.-; MT-MMP 6; MMP-25; MMPL1; MT6-MMP; MMP20A; MT6MMP; Leukolysin; Matrix metalloproteinase-25; MTMMP6; MT-MMP6; MMP20

Application Instructions

Application table	Application	Dilution
	ICC/IF	1:50 - 1:200
	IHC-P	1:50 - 1:200
	WB	1:500 - 1:2000
Application Note	* The dilutions indicate recommended starting dilutions and the optimal dilutions or concentrations should be determined by the scientist.	
Positive Control	A549	
Observed Size	~ 75 kDa	

Properties

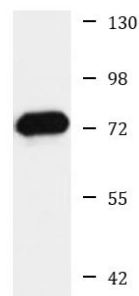
Form	Liquid
Purification	Affinity purified.
Buffer	PBS (pH 7.3), 0.02% Sodium azide and 50% Glycerol.
Preservative	0.02% Sodium azide
Stabilizer	50% Glycerol
Storage instruction	For continuous use, store undiluted antibody at 2-8°C for up to a week. For long-term storage, aliquot and store at -20°C. Storage in frost free freezers is not recommended. Avoid repeated freeze/thaw cycles. Suggest spin the vial prior to opening. The antibody solution should be gently mixed before use.

Note For laboratory research only, not for drug, diagnostic or other use.

Bioinformation

Gene Symbol	MMP25
Gene Full Name	matrix metalloproteinase 25
Background	Proteins of the matrix metalloproteinase (MMP) family are involved in the breakdown of extracellular matrix in normal physiological processes, such as embryonic development, reproduction, and tissue remodeling, as well as in disease processes, such as arthritis and metastasis. Most MMPs are secreted as inactive proproteins which are activated when cleaved by extracellular proteinases. However, the protein encoded by this gene is a member of the membrane-type MMP (MT-MMP) subfamily, attached to the plasma membrane via a glycosylphosphatidyl inositol anchor. In response to bacterial infection or inflammation, the encoded protein is thought to inactivate alpha-1 proteinase inhibitor, a major tissue protectant against proteolytic enzymes released by activated neutrophils, facilitating the transendothelial migration of neutrophils to inflammatory sites. The encoded protein may also play a role in tumor invasion and metastasis through activation of MMP2. The gene has previously been referred to as MMP20 but has been renamed MMP25. [provided by RefSeq, Jul 2008]
Function	May activate progelatinase A. [UniProt]
Calculated Mw	63 kDa
PTM	The precursor is cleaved by a furin endopeptidase. [UniProt]
Cellular Localization	Cell membrane, Extracellular side, GPI-anchor, Lipid-anchor, Secreted, extracellular matrix, extracellular space. [UniProt]

Images



A549

ARG57984 anti-MMP25 antibody WB image

Western blot: 25 µg of A549 cell lysate stained with ARG57984 anti-MMP25 antibody at 1:1000 dilution.