

## ARG57942 anti-Properdin antibody

Package: 100 µl  
Store at: -20°C

### Summary

Product Description	Rabbit Polyclonal antibody recognizes Properdin
Tested Reactivity	Hu, Ms, Rat
Tested Application	ICC/IF, IHC-P, WB
Host	Rabbit
Clonality	Polyclonal
Isotype	IgG
Target Name	Properdin
Species	Human
Immunogen	Recombinant fusion protein corresponding to aa. 190-469 of Human Properdin (NP_001138724.1).
Conjugation	Un-conjugated
Alternate Names	PFC; PFD; BFD; PROPERDIN; Complement factor P; Properdin

### Application Instructions

Application table	Application	Dilution
	ICC/IF	1:50 - 1:200
	IHC-P	1:50 - 1:200
	WB	1:500 - 1:2000
Application Note	* The dilutions indicate recommended starting dilutions and the optimal dilutions or concentrations should be determined by the scientist.	
Positive Control	3T3L1	

### Properties

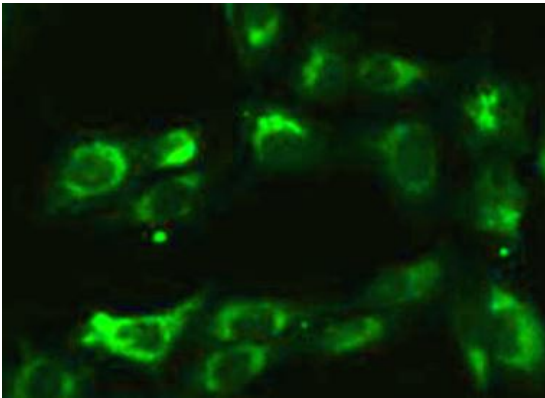
Form	Liquid
Purification	Affinity purified.
Buffer	PBS (pH 7.3), 0.02% Sodium azide and 50% Glycerol.
Preservative	0.02% Sodium azide
Stabilizer	50% Glycerol
Storage instruction	For continuous use, store undiluted antibody at 2-8°C for up to a week. For long-term storage, aliquot and store at -20°C. Storage in frost free freezers is not recommended. Avoid repeated freeze/thaw cycles. Suggest spin the vial prior to opening. The antibody solution should be gently mixed before use.
Note	For laboratory research only, not for drug, diagnostic or other use.

## Bioinformation

---

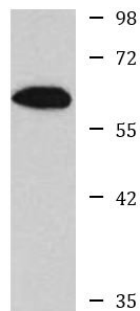
Gene Symbol	CFP
Gene Full Name	complement factor properdin
Background	This gene encodes a plasma glycoprotein that positively regulates the alternative complement pathway of the innate immune system. This protein binds to many microbial surfaces and apoptotic cells and stabilizes the C3- and C5-convertase enzyme complexes in a feedback loop that ultimately leads to formation of the membrane attack complex and lysis of the target cell. Mutations in this gene result in two forms of properdin deficiency, which results in high susceptibility to meningococcal infections. Multiple alternatively spliced variants, encoding the same protein, have been identified.[provided by RefSeq, Feb 2009]
Function	A positive regulator of the alternate pathway of complement. It binds to and stabilizes the C3- and C5-convertase enzyme complexes. [UniProt]
Calculated Mw	51 kDa
Cellular Localization	Secreted. [UniProt]

## Images



ARG57942 anti-Propertin antibody ICC/IF image

Immunofluorescence: U2OS cells stained with ARG57942 anti-Propertin antibody.



3T3L1

ARG57942 anti-Propertin antibody WB image

Western blot: 25 µg of 3T3L1 cell lysate stained with ARG57942 anti-Propertin antibody at 1:1000 dilution.