

## ARG57930 anti-beta 2 Microglobulin antibody

Package: 100 µl  
Store at: -20°C

### Summary

Product Description	Rabbit Polyclonal antibody recognizes beta 2 Microglobulin
Tested Reactivity	Hu, Ms, Rat
Tested Application	ICC/IF, IHC-P, WB
Host	Rabbit
Clonality	Polyclonal
Isotype	IgG
Target Name	beta 2 Microglobulin
Species	Human
Immunogen	Recombinant fusion protein corresponding to aa. 21-119 of Human beta 2 Microglobulin (NP_004039.1).
Conjugation	Un-conjugated
Alternate Names	Beta-2-microglobulin

### Application Instructions

Application table	Application	Dilution
	ICC/IF	1:50 - 1:200
	IHC-P	1:50 - 1:200
	WB	1:500 - 1:2000
Application Note	* The dilutions indicate recommended starting dilutions and the optimal dilutions or concentrations should be determined by the scientist.	
Positive Control	Mouse lung	
Observed Size	12 kDa	

### Properties

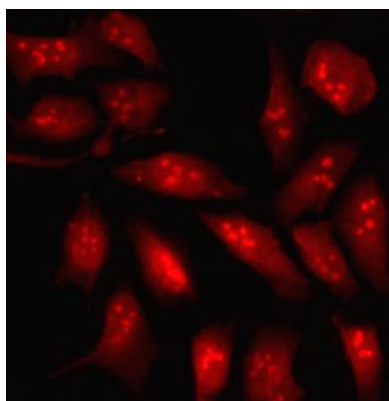
Form	Liquid
Purification	Affinity purified.
Buffer	PBS (pH 7.3), 0.02% Sodium azide and 50% Glycerol.
Preservative	0.02% Sodium azide
Stabilizer	50% Glycerol
Storage instruction	For continuous use, store undiluted antibody at 2-8°C for up to a week. For long-term storage, aliquot and store at -20°C. Storage in frost free freezers is not recommended. Avoid repeated freeze/thaw cycles. Suggest spin the vial prior to opening. The antibody solution should be gently mixed before use.

Note For laboratory research only, not for drug, diagnostic or other use.

## Bioinformation

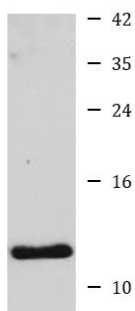
Gene Symbol	B2M
Gene Full Name	beta-2-microglobulin
Background	This gene encodes a serum protein found in association with the major histocompatibility complex (MHC) class I heavy chain on the surface of nearly all nucleated cells. The protein has a predominantly beta-pleated sheet structure that can form amyloid fibrils in some pathological conditions. The encoded antimicrobial protein displays antibacterial activity in amniotic fluid. A mutation in this gene has been shown to result in hypercatabolic hypoproteinemia.[provided by RefSeq, Aug 2014]
Function	Component of the class I major histocompatibility complex (MHC). Involved in the presentation of peptide antigens to the immune system. [UniProt]
Calculated Mw	14 kDa
PTM	Glycation of Ile-21 is observed in long-term hemodialysis patients. [UniProt]
Cellular Localization	Secreted. [UniProt]

## Images



ARG57930 anti-beta 2 Microglobulin antibody ICC/IF image

Immunofluorescence: MCF-7 cells stained with ARG57930 anti-beta 2 Microglobulin antibody.



Mouse lung

ARG57930 anti-beta 2 Microglobulin antibody WB image

Western blot: 25 µg of Mouse lung lysate stained with ARG57930 anti-beta 2 Microglobulin antibody at 1:1000 dilution.