

ARG57892 anti-SM22 alpha / Transgelin antibody

Package: 100 µl

Store at: -20°C

Summary

Product Description	Rabbit Polyclonal antibody recognizes SM22 alpha / Transgelin
Tested Reactivity	Hu, Ms, Rat
Tested Application	IHC-P, WB
Host	Rabbit
Clonality	Polyclonal
Isotype	IgG
Target Name	SM22 alpha / Transgelin
Species	Human
Immunogen	Recombinant fusion protein corresponding to aa. 1-201 of Human Transgelin (NP_001001522.1).
Conjugation	Un-conjugated
Alternate Names	SM22-alpha; 22 kDa actin-binding protein; Smooth muscle protein 22-alpha; Protein WS3-10; Transgelin; WS3-10; TAGLN1; SMCC; SM22

Application Instructions

Application table	Application	Dilution
	IHC-P	1:50 - 1:200
	WB	1:500 - 1:2000
Application Note	* The dilutions indicate recommended starting dilutions and the optimal dilutions or concentrations should be determined by the scientist.	
Positive Control	Mouse heart	
Observed Size	20 kDa	

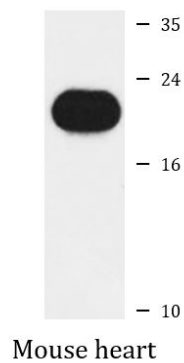
Properties

Form	Liquid
Purification	Affinity purified.
Buffer	PBS (pH 7.3), 0.02% Sodium azide and 50% Glycerol.
Preservative	0.02% Sodium azide
Stabilizer	50% Glycerol
Storage instruction	For continuous use, store undiluted antibody at 2-8°C for up to a week. For long-term storage, aliquot and store at -20°C. Storage in frost free freezers is not recommended. Avoid repeated freeze/thaw cycles. Suggest spin the vial prior to opening. The antibody solution should be gently mixed before use.
Note	For laboratory research only, not for drug, diagnostic or other use.

Bioinformation

Gene Symbol	TAGLN
Gene Full Name	transgelin
Background	The protein encoded by this gene is a transformation and shape-change sensitive actin cross-linking/gelling protein found in fibroblasts and smooth muscle. Its expression is down-regulated in many cell lines, and this down-regulation may be an early and sensitive marker for the onset of transformation. A functional role of this protein is unclear. Two transcript variants encoding the same protein have been found for this gene. [provided by RefSeq, Jul 2008]
Function	Actin cross-linking/gelling protein (By similarity). Involved in calcium interactions and contractile properties of the cell that may contribute to replicative senescence. [UniProt]
Research Area	Cell Biology and Cellular Response antibody; Controls and Markers antibody; Signaling Transduction antibody; Smooth Muscle Marker antibody
Calculated Mw	23 kDa
Cellular Localization	Cytoplasm. [UniProt]

Images



ARG57892 anti-SM22 alpha / Transgelin antibody WB image

Western blot: 25 µg of Mouse heart lysate stained with ARG57892 anti-SM22 alpha / Transgelin antibody at 1:1000 dilution.