

ARG57849 anti-Calumenin antibody

Package: 100 µl
Store at: -20°C

Summary

Product Description	Rabbit Polyclonal antibody recognizes Calumenin
Tested Reactivity	Hu, Ms, Rat
Tested Application	ICC/IF, IHC-P, WB
Host	Rabbit
Clonality	Polyclonal
Isotype	IgG
Target Name	Calumenin
Species	Human
Immunogen	Recombinant protein of Human Calumenin.
Conjugation	Un-conjugated
Alternate Names	Crocalbin; IEF SSP 9302; Calumenin

Application Instructions

Application table	Application	Dilution
	ICC/IF	1:50 - 1:200
	IHC-P	1:50 - 1:200
	WB	1:500 - 1:2000
Application Note	* The dilutions indicate recommended starting dilutions and the optimal dilutions or concentrations should be determined by the scientist.	
Positive Control	Mouse lung	

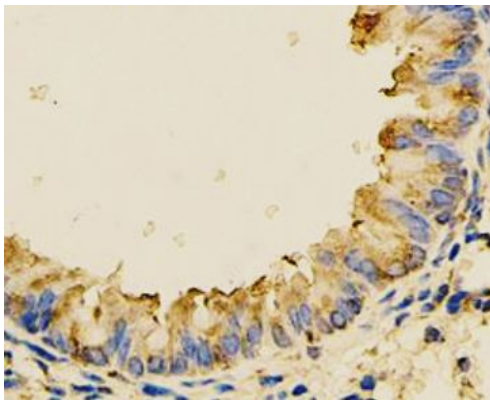
Properties

Form	Liquid
Purification	Affinity purified.
Buffer	PBS (pH 7.3), 0.02% Sodium azide and 50% Glycerol.
Preservative	0.02% Sodium azide
Stabilizer	50% Glycerol
Storage instruction	For continuous use, store undiluted antibody at 2-8°C for up to a week. For long-term storage, aliquot and store at -20°C. Storage in frost free freezers is not recommended. Avoid repeated freeze/thaw cycles. Suggest spin the vial prior to opening. The antibody solution should be gently mixed before use.
Note	For laboratory research only, not for drug, diagnostic or other use.

Bioinformation

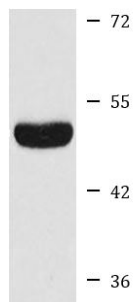
Gene Symbol	CALU
Gene Full Name	calumenin
Background	The product of this gene is a calcium-binding protein localized in the endoplasmic reticulum (ER) and it is involved in such ER functions as protein folding and sorting. This protein belongs to a family of multiple EF-hand proteins (CERC) that include reticulocalbin, ERC-55, and Cab45 and the product of this gene. Alternatively spliced transcript variants encoding different isoforms have been identified. [provided by RefSeq, Oct 2008]
Function	Involved in regulation of vitamin K-dependent carboxylation of multiple N-terminal glutamate residues. Seems to inhibit gamma-carboxylase GGCX. Binds 7 calcium ions with a low affinity (By similarity). [UniProt]
Calculated Mw	37 kDa
Cellular Localization	Endoplasmic reticulum lumen, Secreted, Melanosome, Sarcoplasmic reticulum lumen. [UniProt]

Images



ARG57849 anti-Calumenin antibody IHC-P image

Immunohistochemistry: Paraffin-embedded Mouse lung stained with ARG57849 anti-Calumenin antibody at 1:100 dilution.



Mouse lung

ARG57849 anti-Calumenin antibody WB image

Western blot: 25 µg of Mouse lung lysate stained with ARG57849 anti-Calumenin antibody at 1:1000 dilution.