

ARG57847 anti-DLAT antibody

Package: 100 µl
Store at: -20°C

Summary

Product Description	Rabbit Polyclonal antibody recognizes DLAT
Tested Reactivity	Hu, Ms, Rat
Tested Application	ICC/IF, WB
Host	Rabbit
Clonality	Polyclonal
Isotype	IgG
Target Name	Pyruvate Dehydrogenase E2
Species	Human
Immunogen	Recombinant protein of Human DLAT
Conjugation	Un-conjugated
Alternate Names	Dihydrolipoyllysine-residue acetyltransferase component of pyruvate dehydrogenase complex, mitochondrial; PDC-E2; Dihydrolipoamide acetyltransferase component of pyruvate dehydrogenase complex; M2 antigen complex 70 kDa subunit; EC 2.3.1.12; PBC; Pyruvate dehydrogenase complex component E2; DLTA; 70 kDa mitochondrial autoantigen of primary biliary cirrhosis; PDCE2

Application Instructions

Application table	Application	Dilution
	ICC/IF	1:50 - 1:200
	WB	1:500 - 1:2000
Application Note	* The dilutions indicate recommended starting dilutions and the optimal dilutions or concentrations should be determined by the scientist.	
Positive Control	22RV-1	

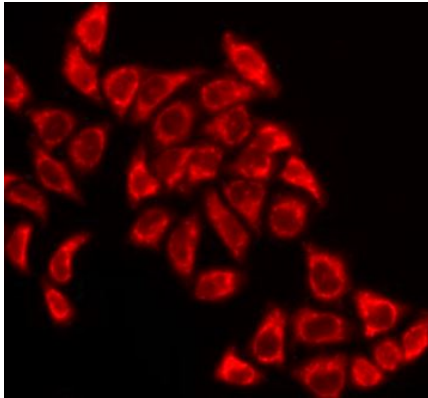
Properties

Form	Liquid
Purification	Affinity purified.
Buffer	PBS (pH 7.3), 0.02% Sodium azide and 50% Glycerol.
Preservative	0.02% Sodium azide
Stabilizer	50% Glycerol
Storage instruction	For continuous use, store undiluted antibody at 2-8°C for up to a week. For long-term storage, aliquot and store at -20°C. Storage in frost free freezers is not recommended. Avoid repeated freeze/thaw cycles. Suggest spin the vial prior to opening. The antibody solution should be gently mixed before use.
Note	For laboratory research only, not for drug, diagnostic or other use.

Bioinformation

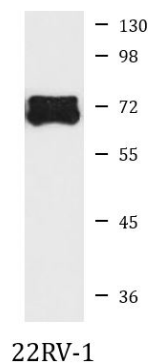
Gene Symbol	DLAT
Gene Full Name	dihydrolipoamide S-acetyltransferase
Background	The pyruvate dehydrogenase complex catalyzes the overall conversion of pyruvate to acetyl-CoA and CO ₂ . It contains multiple copies of three enzymatic components: pyruvate dehydrogenase (E1), dihydrolipoamide acetyltransferase (E2) and lipoamide dehydrogenase (E3).
Function	The pyruvate dehydrogenase complex catalyzes the overall conversion of pyruvate to acetyl-CoA and CO ₂ , and thereby links the glycolytic pathway to the tricarboxylic cycle. [UniProt]
Research Area	Controls and Markers antibody; Metabolism antibody; Signaling Transduction antibody
Calculated Mw	69 kDa
PTM	Delipoylated at Lys-132 and Lys-259 by SIRT4, delipoylation decreases the PHD complex activity.
Cellular Localization	Mitochondrion matrix.

Images



ARG57847 anti-DLAT antibody ICC/IF image

Immunofluorescence: HeLa cells stained with ARG57847 anti-DLAT antibody.



ARG57847 anti-DLAT antibody WB image

Western blot: 25 µg of 22RV-1 cell lysate stained with ARG57847 anti-DLAT antibody at 1:1000 dilution.