

ARG57749 anti-SIRT3 antibody

Package: 100 µl
Store at: -20°C

Summary

Product Description	Rabbit Polyclonal antibody recognizes SIRT3
Tested Reactivity	Hu, Ms, Rat
Tested Application	ICC/IF, IHC-P, IP, WB
Host	Rabbit
Clonality	Polyclonal
Isotype	IgG
Target Name	SIRT3
Species	Human
Immunogen	Synthetic peptide from Human SIRT3.
Conjugation	Un-conjugated
Alternate Names	NAD-dependent protein deacetylase sirtuin-3, mitochondrial; SIR2L3; hSIRT3; EC 3.5.1.-; Regulatory protein SIR2 homolog 3; SIR2-like protein 3

Application Instructions

Application table	Application	Dilution
	ICC/IF	1:50 - 1:100
	IHC-P	1:50 - 1:200
	IP	Assay-dependent
	WB	1:500 - 1:2000
Application Note	* The dilutions indicate recommended starting dilutions and the optimal dilutions or concentrations should be determined by the scientist.	
Positive Control	Mouse liver	
Observed Size	~ 44 kDa	

Properties

Form	Liquid
Purification	Affinity purified.
Buffer	PBS (pH 7.3), 0.02% Sodium azide and 50% Glycerol.
Preservative	0.02% Sodium azide
Stabilizer	50% Glycerol
Storage instruction	For continuous use, store undiluted antibody at 2-8°C for up to a week. For long-term storage, aliquot and store at -20°C. Storage in frost free freezers is not recommended. Avoid repeated freeze/thaw

cycles. Suggest spin the vial prior to opening. The antibody solution should be gently mixed before use.

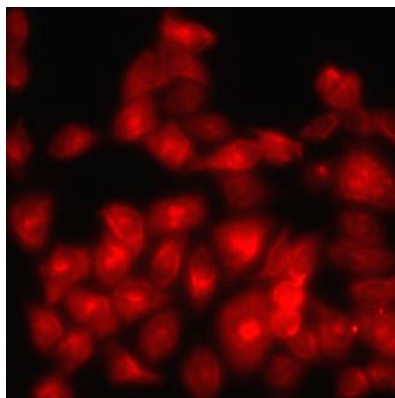
Note

For laboratory research only, not for drug, diagnostic or other use.

Bioinformation

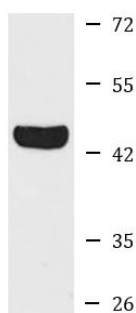
Gene Symbol	SIRT3
Gene Full Name	sirtuin 3
Background	This gene encodes a member of the sirtuin family of proteins, homologs to the yeast Sir2 protein. Members of the sirtuin family are characterized by a sirtuin core domain and grouped into four classes. The functions of human sirtuins have not yet been determined; however, yeast sirtuin proteins are known to regulate epigenetic gene silencing and suppress recombination of rDNA. Studies suggest that the human sirtuins may function as intracellular regulatory proteins with mono-ADP-ribosyltransferase activity. The protein encoded by this gene is included in class I of the sirtuin family. Two alternatively spliced transcript variants that encode different proteins have been described for this gene. [provided by RefSeq, Jul 2008]
Function	NAD-dependent protein deacetylase. Activates or deactivates mitochondrial target proteins by deacetylating key lysine residues. Known targets include ACS1, IDH, GDH, SOD2, PDHA1, LCAD, SDHA and the ATP synthase subunit ATP5O. Contributes to the regulation of the cellular energy metabolism. Important for regulating tissue-specific ATP levels. [UniProt]
Calculated Mw	44 kDa
PTM	Processed by mitochondrial processing peptidase (MPP) to give a 28 kDa product. Such processing is probably essential for its enzymatic activity. [UniProt]
Cellular Localization	Mitochondrion matrix [UniProt]

Images



ARG57749 anti-SIRT3 antibody ICC/IF image

Immunofluorescence: MCF-7 cells stained with ARG57749 anti-SIRT3 antibody.



Mouse liver

ARG57749 anti-SIRT3 antibody WB image

Western blot: 25 µg of Mouse liver lysate stained with ARG57749 anti-SIRT3 antibody at 1:1000 dilution.