

ARG57727
anti-MMP14 / MT1-MMP antibodyPackage: 50 µg
Store at: -20°C

Summary

Product Description	Rabbit Polyclonal antibody recognizes MMP14 / MT1-MMP
Tested Reactivity	Hu, Ms, Rat
Tested Application	IHC-P, WB
Host	Rabbit
Clonality	Polyclonal
Isotype	IgG
Target Name	MMP14 / MT1-MMP
Species	Human
Immunogen	Synthetic peptide around the C-terminus of Human MMP14. (TPRRLLYCQRSLLDKV)
Conjugation	Un-conjugated
Alternate Names	MT1MMP; MT-MMP 1; Membrane-type matrix metalloproteinase 1; MT1-MMP; Membrane-type-1 matrix metalloproteinase; MT-MMP; EC 3.4.24.80; MMP-X1; MMP-14; Matrix metalloproteinase-14; WNCHRS; MTMMP1

Application Instructions

Application table	Application	Dilution
	IHC-P	1 - 5 µg/ml
	WB	0.5 - 1 µg/ml

Application Note * The dilutions indicate recommended starting dilutions and the optimal dilutions or concentrations should be determined by the scientist.

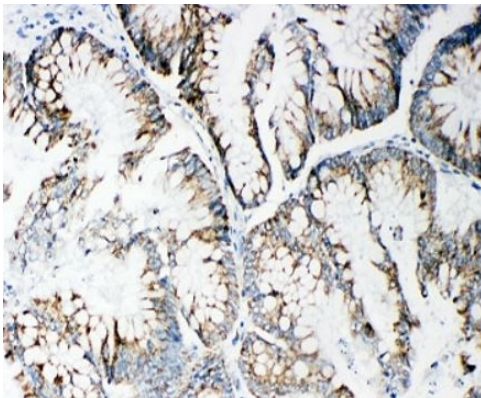
Properties

Form	Liquid
Purification	Affinity purification with immunogen.
Buffer	PBS, 0.025% Sodium azide and 2.5% BSA.
Preservative	0.025% Sodium azide
Stabilizer	2.5% BSA
Concentration	0.5 mg/ml
Storage instruction	For continuous use, store undiluted antibody at 2-8°C for up to a week. For long-term storage, aliquot and store at -20°C or below. Storage in frost free freezers is not recommended. Avoid repeated freeze/thaw cycles. Suggest spin the vial prior to opening. The antibody solution should be gently mixed before use.
Note	For laboratory research only, not for drug, diagnostic or other use.

Bioinformation

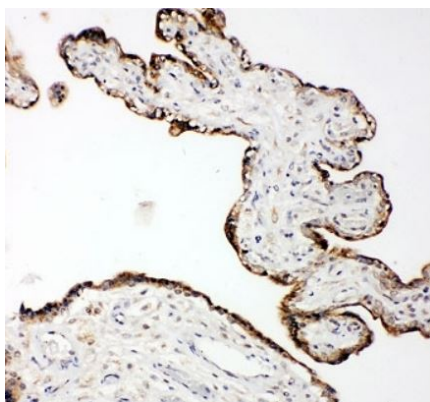
Gene Symbol	MMP14
Gene Full Name	matrix metalloproteinase 14 (membrane-inserted)
Background	Proteins of the matrix metalloproteinase (MMP) family are involved in the breakdown of extracellular matrix in normal physiological processes, such as embryonic development, reproduction, and tissue remodeling, as well as in disease processes, such as arthritis and metastasis. Most MMP's are secreted as inactive proproteins which are activated when cleaved by extracellular proteinases. However, the protein encoded by this gene is a member of the membrane-type MMP (MT-MMP) subfamily; each member of this subfamily contains a potential transmembrane domain suggesting that these proteins are expressed at the cell surface rather than secreted. This protein activates MMP2 protein, and this activity may be involved in tumor invasion. [provided by RefSeq, Jul 2008]
Function	Seems to specifically activate progelatinase A. May thus trigger invasion by tumor cells by activating progelatinase A on the tumor cell surface. May be involved in actin cytoskeleton reorganization by cleaving PTK7. Acts as a positive regulator of cell growth and migration via activation of MMP15. Involved in the formation of the fibrovascular tissues in association with pro-MMP2. [UniProt]
Calculated Mw	66 kDa
PTM	The precursor is cleaved by a furin endopeptidase. Tyrosine phosphorylated by PKDCC/VLK. [UniProt]

Images



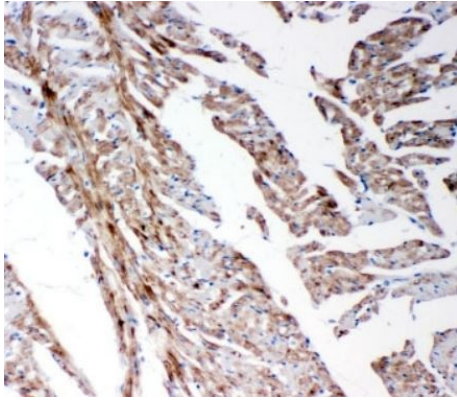
ARG57727 anti-MMP14 / MT1-MMP antibody IHC-P image

Immunohistochemistry: Paraffin-embedded Human intestinal cancer tissue stained with ARG57727 anti-MMP14 / MT1-MMP antibody.



ARG57727 anti-MMP14 / MT1-MMP antibody IHC-P image

Immunohistochemistry: Paraffin-embedded Human placenta tissue stained with ARG57727 anti-MMP14 / MT1-MMP antibody.



ARG57727 anti-MMP14 / MT1-MMP antibody IHC-P image

Immunohistochemistry: Paraffin-embedded Rat heart tissue stained with ARG57727 anti-MMP14 / MT1-MMP antibody.