

## ARG57726 anti-ALDH1A1 antibody [AHDH1-1]

Package: 50 µg  
Store at: -20°C

### Summary

Product Description	Mouse Monoclonal antibody [AHDH1-1] recognizes ALDH1A1
Tested Reactivity	Hu
Tested Application	IHC-P, WB
Host	Mouse
Clonality	Monoclonal
Clone	AHDH1-1
Isotype	IgG1
Target Name	ALDH1A1
Species	Human
Immunogen	Partial recombinant protein around aa. 315-434 of Human ALDH1A1.
Conjugation	Un-conjugated
Alternate Names	HEL-S-53e; RaLDH1; Aldehyde dehydrogenase family 1 member A1; Retinal dehydrogenase 1; HEL-9; RALDH 1; ALDH1; Aldehyde dehydrogenase, cytosolic; ALDH11; EC 1.2.1.36; RALDH1; HEL12; PUMB1; ALHDII; ALDC; ALDH-E1

### Application Instructions

Application table	Application	Dilution
	IHC-P	2 - 5 µg/ml
	WB	1 - 2 µg/ml
Application Note	* The dilutions indicate recommended starting dilutions and the optimal dilutions or concentrations should be determined by the scientist.	
Observed Size	~ 55 kDa	

### Properties

Form	Liquid
Purification	Purification with Protein G.
Buffer	PBS, 0.05% Sodium azide and 0.1 mg/ml BSA.
Preservative	0.05% Sodium azide
Stabilizer	0.1 mg/ml BSA
Concentration	0.2 mg/ml
Storage instruction	For continuous use, store undiluted antibody at 2-8°C for up to a week. For long-term storage, aliquot and store at -20°C or below. Storage in frost free freezers is not recommended. Avoid repeated freeze/thaw cycles. Suggest spin the vial prior to opening. The antibody solution should be gently mixed

before use.

Note

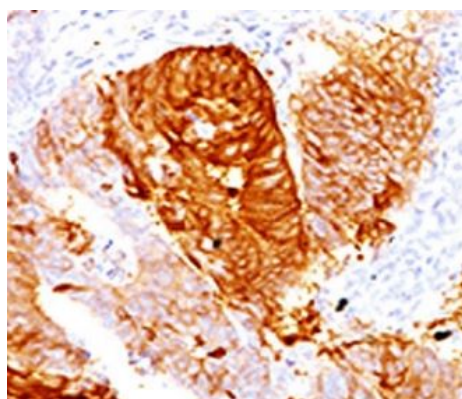
For laboratory research only, not for drug, diagnostic or other use.

## Bioinformation

---

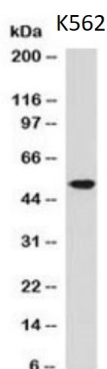
Gene Symbol	ALDH1A1
Gene Full Name	aldehyde dehydrogenase 1 family, member A1
Background	The protein encoded by this gene belongs to the aldehyde dehydrogenase family. Aldehyde dehydrogenase is the next enzyme after alcohol dehydrogenase in the major pathway of alcohol metabolism. There are two major aldehyde dehydrogenase isozymes in the liver, cytosolic and mitochondrial, which are encoded by distinct genes, and can be distinguished by their electrophoretic mobility, kinetic properties, and subcellular localization. This gene encodes the cytosolic isozyme. Studies in mice show that through its role in retinol metabolism, this gene may also be involved in the regulation of the metabolic responses to high-fat diet. [provided by RefSeq, Mar 2011]
Function	Binds free retinal and cellular retinol-binding protein-bound retinal. Can convert/oxidize retinaldehyde to retinoic acid (By similarity). [UniProt]
Calculated Mw	55 kDa
PTM	The N-terminus is blocked most probably by acetylation. [UniProt]

## Images



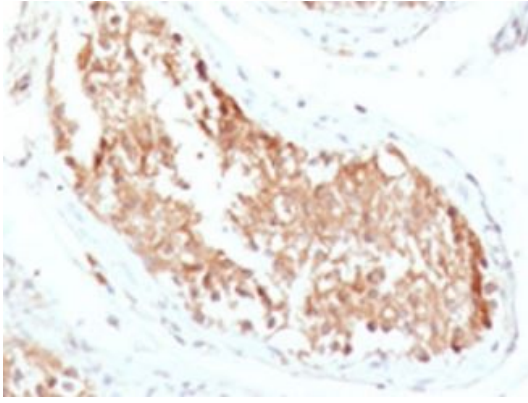
ARG57726 anti-ALDH1A1 antibody [AHDH1-1] IHC-P image

Immunohistochemistry: Formalin-fixed and paraffin-embedded Human colon carcinoma stained with ARG57726 anti-ALDH1A1 antibody [AHDH1-1].



ARG57726 anti-ALDH1A1 antibody [AHDH1-1] WB image

Western blot: K562 cell lysate stained with ARG57726 anti-ALDH1A1 antibody [AHDH1-1].



**ARG57726 anti-ALDH1A1 antibody [AHDH1-1] IHC-P image**

Immunohistochemistry: Formalin-fixed and paraffin-embedded Human testicular carcinoma stained with ARG57726 anti-ALDH1A1 antibody [AHDH1-1].