

**ARG57673**  
**anti-CD34 antibody [RM300]**Package: 50 µl  
Store at: -20°C

### Summary

Product Description	Rabbit Monoclonal antibody [RM300] recognizes CD34
Tested Reactivity	Hu, Ms
Tested Application	IHC-P, WB
Host	Rabbit
Clonality	Monoclonal
Clone	RM300
Isotype	IgG
Target Name	CD34
Antigen Species	Human
Immunogen	Synthetic peptide around the C-terminus of Human CD34.
Conjugation	Un-conjugated
Alternate Names	Hematopoietic progenitor cell antigen CD34; CD antigen CD34

### Application Instructions

Application table	Application	Dilution
	IHC-P	1:100 - 1:200
	WB	1:100 - 1:200
Application Note	* The dilutions indicate recommended starting dilutions and the optimal dilutions or concentrations should be determined by the scientist.	
Calculated Mw	41 kDa	

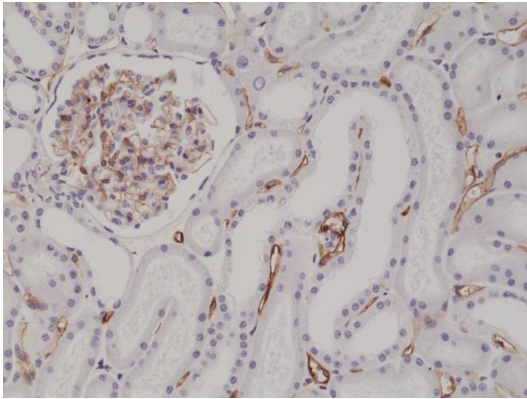
### Properties

Form	Liquid
Purification	Purification with Protein A.
Buffer	PBS, 0.09% Sodium azide, 50% Glycerol and 1% BSA.
Preservative	0.09% Sodium azide
Stabilizer	50% Glycerol and 1% BSA
Storage instruction	For continuous use, store undiluted antibody at 2-8°C for up to a week. For long-term storage, aliquot and store at -20°C. Storage in frost free freezers is not recommended. Avoid repeated freeze/thaw cycles. Suggest spin the vial prior to opening. The antibody solution should be gently mixed before use.
Note	For laboratory research only, not for drug, diagnostic or other use.

## Bioinformation

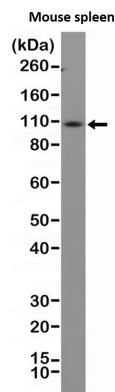
Gene Symbol	CD34
Gene Full Name	CD34 molecule
Background	CD34 protein may play a role in the attachment of stem cells to the bone marrow extracellular matrix or to stromal cells. This single-pass membrane protein is highly glycosylated and phosphorylated by protein kinase C. Two transcript variants encoding different isoforms have been found for this gene. [provided by RefSeq, Aug 2011]
Function	CD34 is a possible adhesion molecule with a role in early hematopoiesis by mediating the attachment of stem cells to the bone marrow extracellular matrix or directly to stromal cells. Could act as a scaffold for the attachment of lineage specific glycans, allowing stem cells to bind to lectins expressed by stromal cells or other marrow components. Presents carbohydrate ligands to selectins. [UniProt]
Research Area	Cancer antibody; Cell Biology and Cellular Response antibody; Controls and Markers antibody; Developmental Biology antibody; Immune System antibody; Neuroscience antibody; Pro-B Cell Marker antibody; Endothelial Cell Marker antibody; Angiogenesis Study antibody

## Images



ARG57673 anti-CD34 antibody [RM300] IHC-P image

Immunohistochemistry: Formalin-fixed and paraffin-embedded Human kidney tissue section stained with ARG57673 anti-CD34 antibody [RM300] at 1:200 dilution.



ARG57673 anti-CD34 antibody [RM300] WB image

Western blot: Mouse spleen tissue lysate stained with ARG57673 anti-CD34 antibody [RM300] at 1:100 dilution.