

ARG57646 anti-POLR2B antibody

Package: 100 µl
Store at: -20°C

Summary

Product Description	Rabbit Polyclonal antibody recognizes POLR2B
Tested Reactivity	Hu, Ms, Rat
Tested Application	IHC-P, WB
Host	Rabbit
Clonality	Polyclonal
Isotype	IgG
Target Name	POLR2B
Species	Human
Immunogen	Recombinant protein of Human POLR2B.
Conjugation	Un-conjugated
Alternate Names	RNA polymerase II subunit 2; RPB2; POL2RB; DNA-directed RNA polymerase II subunit B; DNA-directed RNA polymerase II 140 kDa polypeptide; RNA polymerase II subunit B2; DNA-directed RNA polymerase II subunit RPB2; hRPB140; EC 2.7.7.6

Application Instructions

Application table	Application	Dilution
	IHC-P	1:50 - 1:200
	WB	1:500 - 1:2000
Application Note	* The dilutions indicate recommended starting dilutions and the optimal dilutions or concentrations should be determined by the scientist.	
Positive Control	HepG2	
Observed Size	~ 134 kDa	

Properties

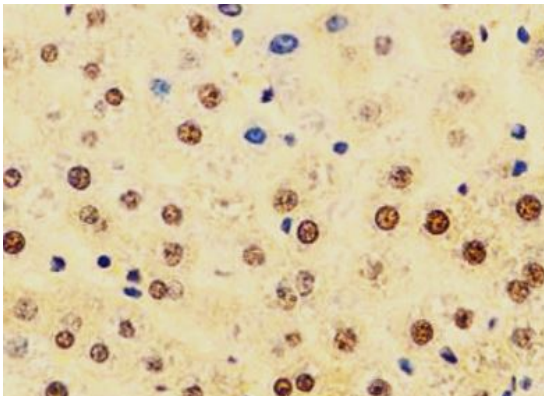
Form	Liquid
Purification	Affinity purified.
Buffer	PBS (pH 7.3), 0.02% Sodium azide and 50% Glycerol.
Preservative	0.02% Sodium azide
Stabilizer	50% Glycerol
Storage instruction	For continuous use, store undiluted antibody at 2-8°C for up to a week. For long-term storage, aliquot and store at -20°C. Storage in frost free freezers is not recommended. Avoid repeated freeze/thaw cycles. Suggest spin the vial prior to opening. The antibody solution should be gently mixed before use.

Note

For laboratory research only, not for drug, diagnostic or other use.

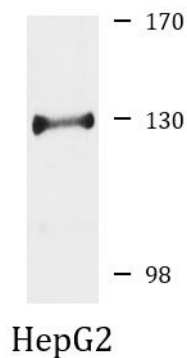
Bioinformation

Gene Symbol	POLR2B
Gene Full Name	polymerase (RNA) II (DNA directed) polypeptide B, 140kDa
Background	This gene encodes the second largest subunit of RNA polymerase II (Pol II), a DNA-dependent RNA polymerase that catalyzes the transcription of DNA into precursors of mRNA, snRNA and microRNA. This subunit and the largest subunit form opposite sides of the center cleft of Pol II. Deletion of the flap loop region of this subunit results in a decrease in the rate of transcriptional elongation. Alternative splicing results in multiple transcript variants. [provided by RefSeq, Dec 2014]
Function	DNA-dependent RNA polymerase catalyzes the transcription of DNA into RNA using the four ribonucleoside triphosphates as substrates. Second largest component of RNA polymerase II which synthesizes mRNA precursors and many functional non-coding RNAs. Proposed to contribute to the polymerase catalytic activity and forms the polymerase active center together with the largest subunit. Pol II is the central component of the basal RNA polymerase II transcription machinery. It is composed of mobile elements that move relative to each other. RPB2 is part of the core element with the central large cleft, the clamp element that moves to open and close the cleft and the jaws that are thought to grab the incoming DNA template (By similarity). [UniProt]
Calculated Mw	134 kDa
Cellular Localization	Nucleus [UniProt]

Images

ARG57646 anti-POLR2B antibody IHC-P image

Immunohistochemistry: Paraffin-embedded Rat liver stained with ARG57646 anti-POLR2B antibody at 1:100 dilution.



ARG57646 anti-POLR2B antibody WB image

Western blot: 25 µg of HepG2 cell lysate stained with ARG57646 anti-POLR2B antibody at 1:1000 dilution.