

ARG57503 anti-HSPA13 / STCH antibody [2F6]

Package: 50 µl
Store at: -20°C

Summary

Product Description	Mouse Monoclonal antibody [2F6] recognizes HSPA13 / STCH
Tested Reactivity	Hu
Tested Application	ICC/IF, WB
Host	Mouse
Clonality	Monoclonal
Clone	2F6
Isotype	IgG1, kappa
Target Name	HSPA13 / STCH
Species	Human
Immunogen	Recombinant Human HSPA13 (aa. 23-471) purified from E. coli.
Conjugation	Un-conjugated
Alternate Names	STCH; Heat shock 70 kDa protein 13; Microsomal stress-70 protein ATPase core; Stress-70 protein chaperone microsome-associated 60 kDa protein

Application Instructions

Application table	Application	Dilution
	ICC/IF	1:100
	WB	1:1000

Application Note * The dilutions indicate recommended starting dilutions and the optimal dilutions or concentrations should be determined by the scientist.

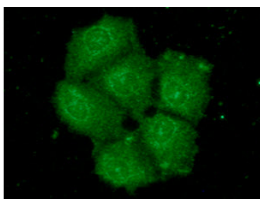
Properties

Form	Liquid
Purification	Purification with Protein A.
Buffer	PBS (pH 7.4), 0.02% Sodium azide and 10% Glycerol.
Preservative	0.02% Sodium azide
Stabilizer	10% Glycerol
Concentration	1 mg/ml
Storage instruction	For continuous use, store undiluted antibody at 2-8°C for up to a week. For long-term storage, aliquot and store at -20°C. Storage in frost free freezers is not recommended. Avoid repeated freeze/thaw cycles. Suggest spin the vial prior to opening. The antibody solution should be gently mixed before use.
Note	For laboratory research only, not for drug, diagnostic or other use.

Bioinformation

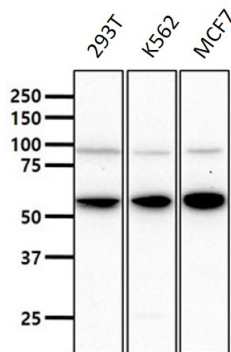
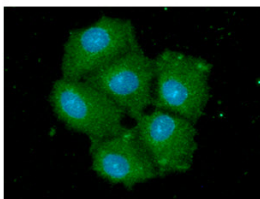
Gene Symbol	HSPA13
Gene Full Name	heat shock protein 70kDa family, member 13
Background	The protein encoded by this gene is a member of the heat shock protein 70 family and is found associated with microsomes. Members of this protein family play a role in the processing of cytosolic and secretory proteins, as well as in the removal of denatured or incorrectly-folded proteins. The encoded protein contains an ATPase domain and has been shown to associate with a ubiquitin-like protein. [provided by RefSeq, Jul 2008]
Function	Has peptide-independent ATPase activity. [UniProt]
Calculated Mw	52 kDa

Images



ARG57503 anti-HSPA13 / STCH antibody [2F6] ICC/IF image

Immunofluorescence: Hep3B cells stained with ARG57503 anti-HSPA13 / STCH antibody [2F6] at 1:100 dilution. The secondary antibody (green) was used Alexa Fluor 488. DAPI was stained the cell nucleus (blue).



ARG57503 anti-HSPA13 / STCH antibody [2F6] WB image

Western blot: 40 µg of 293T, K562 and MCF7 cell lysates stained with ARG57503 anti-HSPA13 / STCH antibody [2F6] at 1:1000 dilution.