

**ARG57408**  
anti-ADH1C antibodyPackage: 100 µl  
Store at: -20°C

### Summary

Product Description	Rabbit Polyclonal antibody recognizes ADH1C
Tested Reactivity	Hu, Ms, Rat
Tested Application	IHC-P, WB
Host	Rabbit
Clonality	Polyclonal
Isotype	IgG
Target Name	ADH1C
Species	Human
Immunogen	Recombinant Protein of Human ADH1C.
Conjugation	Un-conjugated
Alternate Names	ADH3; Alcohol dehydrogenase 1C; Alcohol dehydrogenase subunit gamma; EC 1.1.1.1

### Application Instructions

Application table	Application	Dilution
	IHC-P	1:50 - 1:200
	WB	1:500 - 1:2000
Application Note	* The dilutions indicate recommended starting dilutions and the optimal dilutions or concentrations should be determined by the scientist.	
Positive Control	HepG2	

### Properties

Form	Liquid
Purification	Affinity purification with immunogen.
Buffer	PBS (pH 7.3), 0.02% Sodium azide and 50% Glycerol.
Preservative	0.02% Sodium azide
Stabilizer	50% Glycerol
Storage instruction	For continuous use, store undiluted antibody at 2-8°C for up to a week. For long-term storage, aliquot and store at -20°C. Storage in frost free freezers is not recommended. Avoid repeated freeze/thaw cycles. Suggest spin the vial prior to opening. The antibody solution should be gently mixed before use.
Note	For laboratory research only, not for drug, diagnostic or other use.

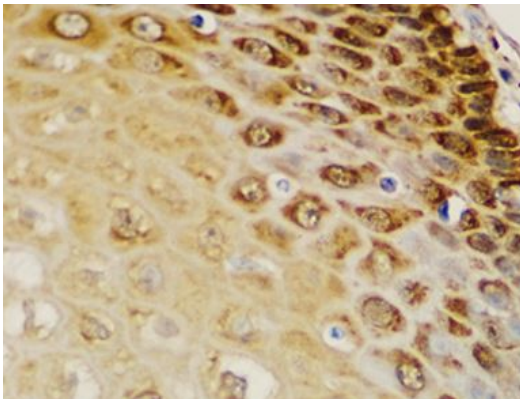
## Bioinformation

---

Gene Symbol	ADH1C
Gene Full Name	alcohol dehydrogenase 1C (class I), gamma polypeptide
Background	This gene encodes class I alcohol dehydrogenase, gamma subunit, which is a member of the alcohol dehydrogenase family. Members of this enzyme family metabolize a wide variety of substrates, including ethanol, retinol, other aliphatic alcohols, hydroxysteroids, and lipid peroxidation products. Class I alcohol dehydrogenase, consisting of several homo- and heterodimers of alpha, beta, and gamma subunits, exhibits high activity for ethanol oxidation and plays a major role in ethanol catabolism. Three genes encoding alpha, beta and gamma subunits are tandemly organized in a genomic segment as a gene cluster. [provided by RefSeq, Jul 2008]
Calculated Mw	40 kDa

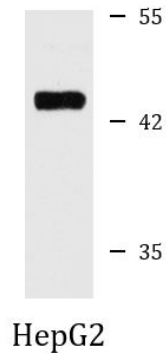
## Images

---



ARG57408 anti-ADH1C antibody IHC-P image

Immunohistochemistry: Paraffin-embedded Human esophagus stained with ARG57408 anti-ADH1C antibody at 1:100 dilution.



ARG57408 anti-ADH1C antibody WB image

Western blot: HepG2 cell lysate stained with ARG57408 anti-ADH1C antibody.