

ARG57398 anti-CCT7 / TCP1 eta antibody

Package: 100 µl
Store at: -20°C

Summary

| | |
|---------------------|---|
| Product Description | Rabbit Polyclonal antibody recognizes CCT7 / TCP1 eta |
| Tested Reactivity | Hu, Ms, Rat |
| Tested Application | WB |
| Host | Rabbit |
| Clonality | Polyclonal |
| Isotype | IgG |
| Target Name | CCT7 / TCP1 eta |
| Species | Human |
| Immunogen | Recombinant Protein of Human CCT7 / TCP1 eta. |
| Conjugation | Un-conjugated |
| Alternate Names | TCP1ETA; CCT-eta; CCTETA; T-complex protein 1 subunit eta; CCTH; TCP-1-eta; NIP7-1; HIV-1 Nef-interacting protein |

Application Instructions

| | | |
|-------------------|--|----------------|
| Application table | Application | Dilution |
| | WB | 1:500 - 1:2000 |
| Application Note | * The dilutions indicate recommended starting dilutions and the optimal dilutions or concentrations should be determined by the scientist. | |
| Positive Control | U87 | |

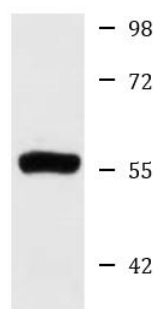
Properties

| | |
|---------------------|---|
| Form | Liquid |
| Purification | Affinity purification with immunogen. |
| Buffer | PBS (pH 7.3), 0.02% Sodium azide and 50% Glycerol. |
| Preservative | 0.02% Sodium azide |
| Stabilizer | 50% Glycerol |
| Storage instruction | For continuous use, store undiluted antibody at 2-8°C for up to a week. For long-term storage, aliquot and store at -20°C. Storage in frost free freezers is not recommended. Avoid repeated freeze/thaw cycles. Suggest spin the vial prior to opening. The antibody solution should be gently mixed before use. |
| Note | For laboratory research only, not for drug, diagnostic or other use. |

Bioinformation

| | |
|----------------|---|
| Gene Symbol | CCT7 |
| Gene Full Name | chaperonin containing TCP1, subunit 7 (eta) |
| Background | This gene encodes a molecular chaperone that is a member of the chaperonin containing TCP1 complex (CCT), also known as the TCP1 ring complex (TRiC). This complex consists of two identical stacked rings, each containing eight different proteins. Unfolded polypeptides enter the central cavity of the complex and are folded in an ATP-dependent manner. The complex folds various proteins, including actin and tubulin. Alternative splicing results in multiple transcript variants. Related pseudogenes have been identified on chromosomes 5 and 6. [provided by RefSeq, Oct 2009] |
| Function | Molecular chaperone; assists the folding of proteins upon ATP hydrolysis. Known to play a role, in vitro, in the folding of actin and tubulin (By similarity). [UniProt] |
| Calculated Mw | 59 kDa |

Images



U87

ARG57398 anti-CCT7 / TCP1 eta antibody WB image

Western blot: U87 cell lysate stained with ARG57398 anti-CCT7 / TCP1 eta antibody.