

ARG57350 anti-BRIP1 antibody

Package: 100 µl
Store at: -20°C

Summary

| | |
|---------------------|---|
| Product Description | Rabbit Polyclonal antibody recognizes BRIP1 |
| Tested Reactivity | Hu |
| Tested Application | WB |
| Host | Rabbit |
| Clonality | Polyclonal |
| Isotype | IgG |
| Target Name | BRIP1 |
| Species | Human |
| Immunogen | Recombinant Protein of Human BRIP1. |
| Conjugation | Un-conjugated |
| Alternate Names | BRCA1-interacting protein C-terminal helicase 1; ATP-dependent RNA helicase BRIP1; OF; BACH1; BRCA1-interacting protein 1; EC 3.6.4.13; Protein FACJ; BRCA1-associated C-terminal helicase 1; FANCI; Fanconi anemia group J protein |

Application Instructions

| | | |
|-------------------|--|----------------|
| Application table | Application | Dilution |
| | WB | 1:500 - 1:2000 |
| Application Note | * The dilutions indicate recommended starting dilutions and the optimal dilutions or concentrations should be determined by the scientist. | |
| Positive Control | Mouse liver | |

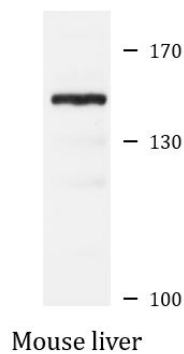
Properties

| | |
|---------------------|---|
| Form | Liquid |
| Purification | Affinity purification with immunogen. |
| Buffer | PBS (pH 7.3), 0.02% Sodium azide and 50% Glycerol. |
| Preservative | 0.02% Sodium azide |
| Stabilizer | 50% Glycerol |
| Storage instruction | For continuous use, store undiluted antibody at 2-8°C for up to a week. For long-term storage, aliquot and store at -20°C. Storage in frost free freezers is not recommended. Avoid repeated freeze/thaw cycles. Suggest spin the vial prior to opening. The antibody solution should be gently mixed before use. |
| Note | For laboratory research only, not for drug, diagnostic or other use. |

Bioinformation

| | |
|----------------|--|
| Gene Symbol | BRIP1 |
| Gene Full Name | BRCA1 interacting protein C-terminal helicase 1 |
| Background | The protein encoded by this gene is a member of the RecQ DEAH helicase family and interacts with the BRCT repeats of breast cancer, type 1 (BRCA1). The bound complex is important in the normal double-strand break repair function of breast cancer, type 1 (BRCA1). This gene may be a target of germline cancer-inducing mutations. [provided by RefSeq, Jul 2008] |
| Function | DNA-dependent ATPase and 5' to 3' DNA helicase required for the maintenance of chromosomal stability. Acts late in the Fanconi anemia pathway, after FANCD2 ubiquitination. Involved in the repair of DNA double-strand breaks by homologous recombination in a manner that depends on its association with BRCA1. [UniProt] |
| Calculated Mw | 141 kDa |
| PTM | Phosphorylated. Phosphorylation is necessary for interaction with BRCA1, and is cell-cycle regulated. Acetylation at Lys-1249 facilitates DNA end processing required for repair and checkpoint signaling. |

Images



ARG57350 anti-BRIP1 antibody WB image

Western blot: Mouse liver lysate stained with ARG57350 anti-BRIP1 antibody.