

**ARG57342**  
anti-BTD antibodyPackage: 100 µl  
Store at: -20°C

### Summary

Product Description	Rabbit Polyclonal antibody recognizes BTD
Tested Reactivity	Hu, Ms, Rat
Tested Application	IHC-P, WB
Host	Rabbit
Clonality	Polyclonal
Isotype	IgG
Target Name	BTD
Species	Human
Immunogen	Recombinant Protein of Human BTD.
Conjugation	Un-conjugated
Alternate Names	EC 3.5.1.12; Biotinidase; Biotinase

### Application Instructions

Application table	Application	Dilution
	IHC-P	1:50 - 1:200
	WB	1:500 - 1:2000
Application Note	* The dilutions indicate recommended starting dilutions and the optimal dilutions or concentrations should be determined by the scientist.	
Positive Control	Mouse kidney	

### Properties

Form	Liquid
Purification	Affinity purification with immunogen.
Buffer	PBS (pH 7.3), 0.02% Sodium azide and 50% Glycerol.
Preservative	0.02% Sodium azide
Stabilizer	50% Glycerol
Storage instruction	For continuous use, store undiluted antibody at 2-8°C for up to a week. For long-term storage, aliquot and store at -20°C. Storage in frost free freezers is not recommended. Avoid repeated freeze/thaw cycles. Suggest spin the vial prior to opening. The antibody solution should be gently mixed before use.
Note	For laboratory research only, not for drug, diagnostic or other use.

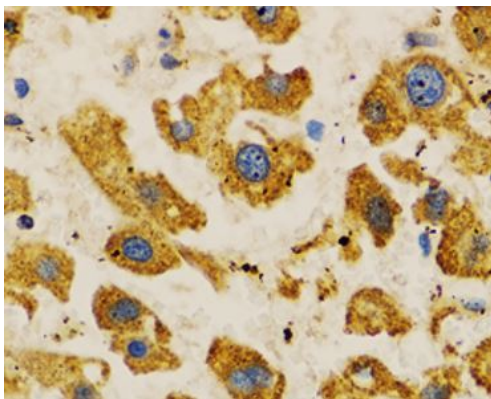
## Bioinformation

---

Gene Symbol	BTD
Gene Full Name	biotinidase
Background	The protein encoded by this gene functions to recycle protein-bound biotin by cleaving biocytin (biotin-epsilon-lysine), a normal product of carboxylase degradation, resulting in regeneration of free biotin. The encoded protein has also been shown to have biotinyl transferase activity. Mutations in this gene are associated with biotinidase deficiency. Multiple transcript variants encoding different isoforms have been described. [provided by RefSeq, Aug 2013]
Function	Catalytic release of biotin from biocytin, the product of biotin-dependent carboxylases degradation. [UniProt]
Calculated Mw	61 kDa

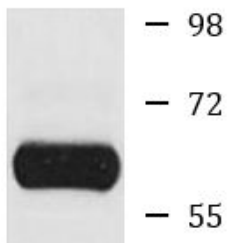
## Images

---



ARG57342 anti-BTD antibody IHC-P image

Immunohistochemistry: Paraffin-embedded Human liver cancer stained with ARG57342 anti-BTD antibody at 1:100 dilution.



ARG57342 anti-BTD antibody WB image

Western blot: Mouse kidney lysate stained with ARG57342 anti-BTD antibody.

Mouse kidney