

ARG57331
anti-CC2D1A antibodyPackage: 100 µl
Store at: -20°C

Summary

Product Description	Rabbit Polyclonal antibody recognizes CC2D1A
Tested Reactivity	Hu, Ms, Rat
Tested Application	IHC-P, WB
Host	Rabbit
Clonality	Polyclonal
Isotype	IgG
Target Name	CC2D1A
Species	Human
Immunogen	Recombinant Protein of Human CC2D1A.
Conjugation	Un-conjugated
Alternate Names	MRT3; Five prime repressor element under dual repression-binding protein 1; Freud-1/Aki1; FREUD-1; Akt kinase-interacting protein 1; Putative NF-kappa-B-activating protein 023N; Freud-1; FRE under dual repression-binding protein 1; Coiled-coil and C2 domain-containing protein 1A

Application Instructions

Application table	Application	Dilution
	IHC-P	1:50 - 1:200
	WB	1:500-1:2000
Application Note	* The dilutions indicate recommended starting dilutions and the optimal dilutions or concentrations should be determined by the scientist.	
Positive Control	SKOV3	

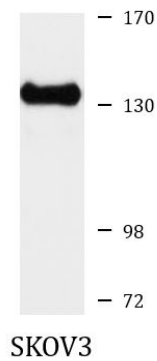
Properties

Form	Liquid
Purification	Affinity purification with immunogen.
Buffer	PBS (pH 7.3), 0.02% Sodium azide and 50% Glycerol.
Preservative	0.02% Sodium azide
Stabilizer	50% Glycerol
Storage instruction	For continuous use, store undiluted antibody at 2-8°C for up to a week. For long-term storage, aliquot and store at -20°C. Storage in frost free freezers is not recommended. Avoid repeated freeze/thaw cycles. Suggest spin the vial prior to opening. The antibody solution should be gently mixed before use.
Note	For laboratory research only, not for drug, diagnostic or other use.

Bioinformation

Gene Symbol	CC2D1A
Gene Full Name	coiled-coil and C2 domain containing 1A
Background	This gene encodes a transcriptional repressor that binds to a conserved 14-bp 5'-repressor element and regulates expression of the 5-hydroxytryptamine (serotonin) receptor 1A gene in neuronal cells. The DNA binding and transcriptional repressor activities of the protein are inhibited by calcium. A mutation in this gene results in nonsyndromic mental retardation-3.[provided by RefSeq, Oct 2009]
Function	Transcription factor that binds specifically to the DRE (dual repressor element) and represses HTR1A gene transcription in neuronal cells. The combination of calcium and ATP specifically inactivates the binding with FRE. May play a role in the altered regulation of HTR1A associated with anxiety and major depression. Mediates HDAC-independent repression of HTR1A promoter in neuronal cell. Performs essential function in controlling functional maturation of synapses (By similarity). Plays distinct roles depending on its localization. When cytoplasmic, acts as a scaffold protein in the PI3K/PDK1/AKT pathway. Repressor of HTR1A when nuclear. In the centrosome, regulates spindle pole localization of the cohesin subunit SCC1/RAD21, thereby mediating centriole cohesion during mitosis. [UniProt]
Calculated Mw	104 kDa
PTM	Phosphorylation on Ser-208 by CDK1 promotes spindle pole localization and association with SCC1/RAD21.

Images



ARG57331 anti-CC2D1A antibody WB image

Western blot: SKOV3 cell lysate stained with ARG57331 anti-CC2D1A antibody.