

**ARG57305**  
anti-CETP / Cholesteryl Ester Transfer Protein antibodyPackage: 100 µl  
Store at: -20°C

### Summary

Product Description	Rabbit Polyclonal antibody recognizes CETP / Cholesteryl Ester Transfer Protein
Tested Reactivity	Hu
Tested Application	IHC-P, WB
Host	Rabbit
Clonality	Polyclonal
Isotype	IgG
Target Name	CETP / Cholesteryl Ester Transfer Protein
Species	Human
Immunogen	Recombinant Protein of Human CETP.
Conjugation	Un-conjugated
Alternate Names	HDLCQ10; Lipid transfer protein I; BPIFF; Cholesteryl ester transfer protein

### Application Instructions

Application table	Application	Dilution
	IHC-P	1:50 - 1:200
	WB	1:500 - 1:2000
Application Note	* The dilutions indicate recommended starting dilutions and the optimal dilutions or concentrations should be determined by the scientist.	
Positive Control	Jurkat	

### Properties

Form	Liquid
Purification	Affinity purification with immunogen.
Buffer	PBS (pH 7.3), 0.02% Sodium azide and 50% Glycerol.
Preservative	0.02% Sodium azide
Stabilizer	50% Glycerol
Storage instruction	For continuous use, store undiluted antibody at 2-8°C for up to a week. For long-term storage, aliquot and store at -20°C. Storage in frost free freezers is not recommended. Avoid repeated freeze/thaw cycles. Suggest spin the vial prior to opening. The antibody solution should be gently mixed before use.
Note	For laboratory research only, not for drug, diagnostic or other use.

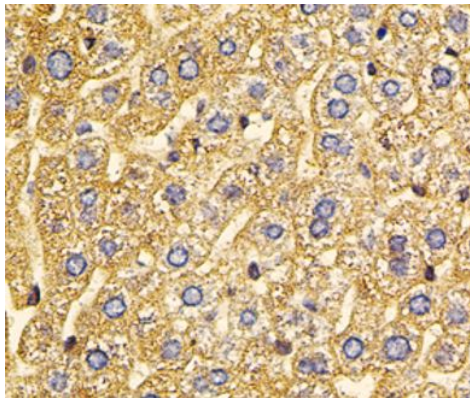
## Bioinformation

---

Gene Symbol	CETP
Gene Full Name	cholesteryl ester transfer protein, plasma
Background	The protein encoded by this gene is found in plasma, where it is involved in the transfer of cholesteryl ester from high density lipoprotein (HDL) to other lipoproteins. Defects in this gene are a cause of hyperalphalipoproteinemia 1 (HALP1). Two transcript variants encoding different isoforms have been found for this gene. [provided by RefSeq, Oct 2013]
Function	Involved in the transfer of neutral lipids, including cholesteryl ester and triglyceride, among lipoprotein particles. Allows the net movement of cholesteryl ester from high density lipoproteins/HDL to triglyceride-rich very low density lipoproteins/VLDL, and the equimolar transport of triglyceride from VLDL to HDL. Regulates the reverse cholesterol transport, by which excess cholesterol is removed from peripheral tissues and returned to the liver for elimination. [UniProt]
Calculated Mw	55 kDa

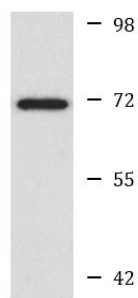
## Images

---



ARG57305 anti-CETP / Cholesteryl Ester Transfer Protein antibody  
IHC-P image

Immunohistochemistry: Paraffin-embedded Mouse liver stained with ARG57305 anti-CETP / Cholesteryl Ester Transfer Protein antibody.



Jurkat

ARG57305 anti-CETP / Cholesteryl Ester Transfer Protein antibody  
WB image

Western blot: Jurkat cell lysate stained with ARG57305 anti-CETP / Cholesteryl Ester Transfer Protein antibody.