

ARG57166 anti-Glutathione Synthetase antibody [12F2]

Package: 50 µl
Store at: -20°C

Summary

Product Description	Mouse Monoclonal antibody [12F2] recognizes Glutathione Synthetase
Tested Reactivity	Hu
Tested Application	WB
Host	Mouse
Clonality	Monoclonal
Clone	12F2
Isotype	IgG1, kappa
Target Name	Glutathione Synthetase
Species	Human
Immunogen	Recombinant fragment around aa. 1-474 of Human Glutathione Synthetase
Conjugation	Un-conjugated
Alternate Names	Glutathione synthase; GSH synthetase; EC 6.3.2.3; HEL-S-64p; Glutathione synthetase; GSHS; HEL-S-88n; GSH-S

Application Instructions

Application table	Application	Dilution
	WB	Assay-dependent

Application Note * The dilutions indicate recommended starting dilutions and the optimal dilutions or concentrations should be determined by the scientist.

Properties

Form	Liquid
Purification	Purification with Protein A.
Buffer	PBS (pH 7.4), 0.02% Sodium azide and 10% Glycerol.
Preservative	0.02% Sodium azide
Stabilizer	10% Glycerol
Concentration	1 mg/ml
Storage instruction	For continuous use, store undiluted antibody at 2-8°C for up to a week. For long-term storage, aliquot and store at -20°C. Storage in frost free freezers is not recommended. Avoid repeated freeze/thaw cycles. Suggest spin the vial prior to opening. The antibody solution should be gently mixed before use.
Note	For laboratory research only, not for drug, diagnostic or other use.

Bioinformation

Database links

[GeneID: 2937 Human](#)

[Swiss-port # P48637 Human](#)

Gene Symbol

GSS

Gene Full Name

glutathione synthetase

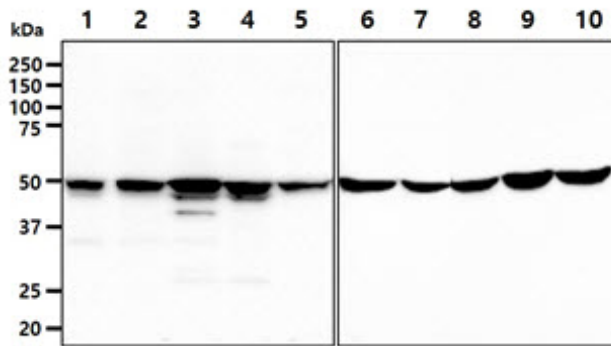
Background

Glutathione is important for a variety of biological functions, including protection of cells from oxidative damage by free radicals, detoxification of xenobiotics, and membrane transport. The protein encoded by this gene functions as a homodimer to catalyze the second step of glutathione biosynthesis, which is the ATP-dependent conversion of gamma-L-glutamyl-L-cysteine to glutathione. Defects in this gene are a cause of glutathione synthetase deficiency. [provided by RefSeq, Jul 2008]

Calculated Mw

52 kDa

Images



ARG57166 anti-Glutathione Synthetase antibody [12F2] WB image

Western blot: 40 µg of 1) MDA-MB231, 2) WiDr, 3) SW480, 4) A427, 5) MCF7, 6) 293T, 7) HeLa, 8) HT1080, 9) U87MG, and 10) A549 cell lysates stained with ARG57166 anti-Glutathione Synthetase antibody [12F2] at 1:1000.