

## ARG57119 anti-SAR1B / SARA2 antibody [1C7]

Package: 50 µl  
Store at: -20°C

### Summary

Product Description	Mouse Monoclonal antibody [1C7] recognizes SAR1B / SARA2
Tested Reactivity	Hu
Tested Application	FACS, WB
Host	Mouse
Clonality	Monoclonal
Clone	1C7
Isotype	IgG1, kappa
Target Name	SAR1B / SARA2
Species	Human
Immunogen	Recombinant fragment around aa. 1-198 of Human SAR1B / SARA2
Conjugation	Un-conjugated
Alternate Names	ANDD; GTP-binding protein SAR1b; GTP-binding protein B; CMRD; SARA2; GTBPB

### Application Instructions

Application table	Application	Dilution
	FACS	Assay-dependent
	WB	1:1000
Application Note	* The dilutions indicate recommended starting dilutions and the optimal dilutions or concentrations should be determined by the scientist.	

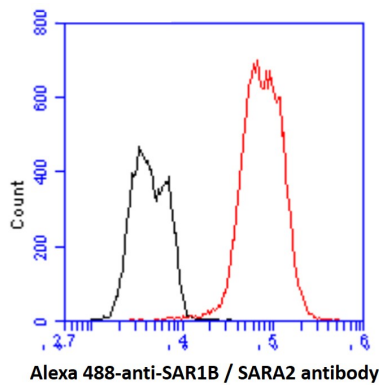
### Properties

Form	Liquid
Purification	Purification with Protein A.
Buffer	PBS (pH 7.4), 0.02% Sodium azide and 10% Glycerol.
Preservative	0.02% Sodium azide
Stabilizer	10% Glycerol
Concentration	1 mg/ml
Storage instruction	For continuous use, store undiluted antibody at 2-8°C for up to a week. For long-term storage, aliquot and store at -20°C. Storage in frost free freezers is not recommended. Avoid repeated freeze/thaw cycles. Suggest spin the vial prior to opening. The antibody solution should be gently mixed before use.
Note	For laboratory research only, not for drug, diagnostic or other use.

## Bioinformation

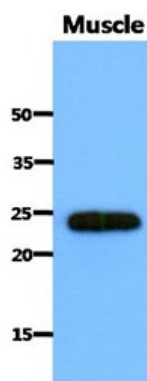
Database links	<a href="#">GeneID: 51128 Human</a> <a href="#">Swiss-port # Q9Y6B6 Human</a>
Gene Symbol	SAR1B
Gene Full Name	secretion associated, Ras related GTPase 1B
Background	The protein encoded by this gene is a small GTPase that acts as a homodimer. The encoded protein is activated by the guanine nucleotide exchange factor PREB and is involved in protein transport from the endoplasmic reticulum to the Golgi. This protein is part of the COPII coat complex. Defects in this gene are a cause of chylomicron retention disease (CMRD), also known as Anderson disease (ANDD). Two transcript variants encoding the same protein have been found for this gene. [provided by RefSeq, Mar 2010]
Function	Involved in transport from the endoplasmic reticulum to the Golgi apparatus. Activated by the guanine nucleotide exchange factor PREB. Involved in the selection of the protein cargo and the assembly of the COPII coat complex. [UniProt]
Calculated Mw	22 kDa

## Images



ARG57119 anti-SAR1B / SARA2 antibody [1C7] FACS image

Flow Cytometry: Hep3B cell line stained with ARG57119 anti-SAR1B / SARA2 antibody [1C7] at 2-5  $\mu\text{g}$  for  $1 \times 10^6$  cells (red line).  
Secondary antibody: Goat anti-Mouse IgG Alexa fluor 488 conjugate.  
Isotype control antibody: Mouse IgG (black line).



ARG57119 anti-SAR1B / SARA2 antibody [1C7] WB image

Western blot: 40  $\mu\text{g}$  of Mouse muscle lysate stained with ARG57119 anti-SAR1B / SARA2 antibody [1C7] at 1:1000.