

## ARG57117 anti-GCLM antibody [2D12]

Package: 50 µl  
Store at: -20°C

### Summary

|                     |  |
|---------------------|--|
| Product Description | Mouse Monoclonal antibody [2D12] recognizes GCLM   |
| Tested Reactivity   | Hu   |
| Tested Application  | ICC/IF, WB   |
| Host                | Mouse  |
| Clonality           | Monoclonal   |
| Clone               | 2D12   |
| Isotype             | IgG1, kappa  |
| Target Name         | GCLM   |
| Species             | Human  |
| Immunogen           | Recombinant fragment around aa. 1-274 of Human GCLM  |
| Conjugation         | Un-conjugated  |
| Alternate Names     | GCS light chain; Gamma-ECS regulatory subunit; Glutamate--cysteine ligase regulatory subunit; GLCLR; Gamma-glutamylcysteine synthetase regulatory subunit; Glutamate--cysteine ligase modifier subunit |

### Application Instructions

| Application table | Application | Dilution        |
|-------------------|-------------|-----------------|
|                   | ICC/IF      | Assay-dependent |
|                   | WB          | 1:3000          |

**Application Note** \* The dilutions indicate recommended starting dilutions and the optimal dilutions or concentrations should be determined by the scientist.

### Properties

|                     |   |
|---------------------|---|
| Form                | Liquid  |
| Purification        | Purification with Protein G.  |
| Buffer              | PBS (pH 7.4), 0.02% Sodium azide and 10% Glycerol.  |
| Preservative        | 0.02% Sodium azide  |
| Stabilizer          | 10% Glycerol  |
| Concentration       | 1 mg/ml   |
| Storage instruction | For continuous use, store undiluted antibody at 2-8°C for up to a week. For long-term storage, aliquot and store at -20°C. Storage in frost free freezers is not recommended. Avoid repeated freeze/thaw cycles. Suggest spin the vial prior to opening. The antibody solution should be gently mixed before use. |
| Note                | For laboratory research only, not for drug, diagnostic or other use.  |

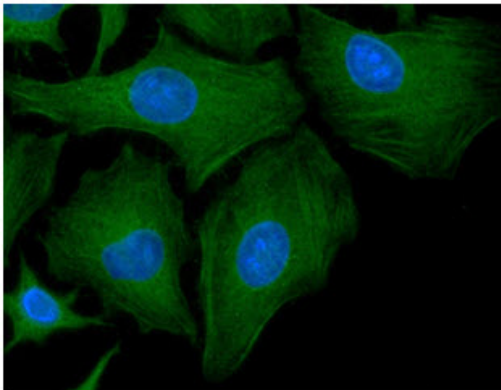
## Bioinformation

---

|                |   |
|----------------|---|
| Database links | <a href="#">GeneID: 2730 Human</a><br><a href="#">Swiss-port # P48507 Human</a>   |
| Gene Symbol    | GCLM  |
| Gene Full Name | glutamate-cysteine ligase, modifier subunit   |
| Background     | Glutamate-cysteine ligase, also known as gamma-glutamylcysteine synthetase, is the first rate limiting enzyme of glutathione synthesis. The enzyme consists of two subunits, a heavy catalytic subunit and a light regulatory subunit. Gamma glutamylcysteine synthetase deficiency has been implicated in some forms of hemolytic anemia. Alternative splicing results in multiple transcript variants encoding different isoforms. [provided by RefSeq, Apr 2015] |
| Calculated Mw  | 31 kDa  |

## Images

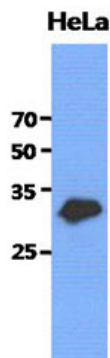
---



ARG57117 anti-GCLM antibody [2D12] ICC/IF image

Immunofluorescence: HeLa cells line stained with ARG57117 anti-GCLM antibody [2D12] at 1:100 (Green).

DAPI (Blue) for nucleus staining.



ARG57117 anti-GCLM antibody [2D12] WB image

Western blot: 40 µg of HeLa cell lysate stained with ARG57117 anti-GCLM antibody [2D12] at 1:3000.