

## ARG57076 anti-Cystatin A antibody [1B12]

Package: 50 µl  
Store at: -20°C

### Summary

Product Description	Mouse Monoclonal antibody [1B12] recognizes Cystatin A
Tested Reactivity	Hu
Tested Application	WB
Host	Mouse
Clonality	Monoclonal
Clone	1B12
Isotype	IgG1, kappa
Target Name	Cystatin A
Species	Human
Immunogen	Recombinant fragment around aa. 1-98 of Human Cystatin A.
Conjugation	Un-conjugated
Alternate Names	STFA; Cystatin-A; AREI; STF1; Cystatin-AS; Stefin-A

### Application Instructions

Application table	<table><thead><tr><th>Application</th><th>Dilution</th></tr></thead><tbody><tr><td>WB</td><td>Assay-dependent</td></tr></tbody></table>	Application	Dilution	WB	Assay-dependent
Application	Dilution				
WB	Assay-dependent				
Application Note	* The dilutions indicate recommended starting dilutions and the optimal dilutions or concentrations should be determined by the scientist.				

### Properties

Form	Liquid
Purification	Purification with Protein A.
Buffer	PBS (pH 7.4), 0.02% Sodium azide and 10% Glycerol.
Preservative	0.02% Sodium azide
Stabilizer	10% Glycerol
Concentration	1 mg/ml
Storage instruction	For continuous use, store undiluted antibody at 2-8°C for up to a week. For long-term storage, aliquot and store at -20°C. Storage in frost free freezers is not recommended. Avoid repeated freeze/thaw cycles. Suggest spin the vial prior to opening. The antibody solution should be gently mixed before use.
Note	For laboratory research only, not for drug, diagnostic or other use.

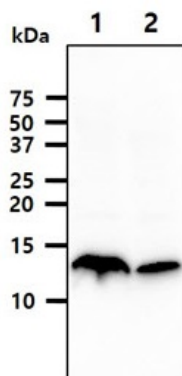
## Bioinformation

---

Database links	<a href="#">GeneID: 1475 Human</a> <a href="#">Swiss-port # P01040 Human</a>
Gene Symbol	CSTA
Gene Full Name	cystatin A (stefin A)
Background	The cystatin superfamily encompasses proteins that contain multiple cystatin-like sequences. Some of the members are active cysteine protease inhibitors, while others have lost or perhaps never acquired this inhibitory activity. There are three inhibitory families in the superfamily, including the type 1 cystatins (stefins), type 2 cystatins, and kininogens. This gene encodes a stefin that functions as a cysteine protease inhibitor, forming tight complexes with papain and the cathepsins B, H, and L. The protein is one of the precursor proteins of cornified cell envelope in keratinocytes and plays a role in epidermal development and maintenance. Stefins have been proposed as prognostic and diagnostic tools for cancer. [provided by RefSeq, Jul 2008]
Function	This is an intracellular thiol proteinase inhibitor. Has an important role in desmosome-mediated cell-cell adhesion in the lower levels of the epidermis. [UniProt]
Calculated Mw	11 kDa

## Images

---



ARG57076 anti-Cystatin A antibody [1B12] WB image

Western blot: 40 µg of 1) A431 cell lysate, 2) THP1 cell lysate stained with ARG57076 anti-Cystatin A antibody [1B12] at 1:1000.