

## ARG57044 anti-TBCEL antibody [1B10]

Package: 50 µl  
Store at: -20°C

### Summary

Product Description	Mouse Monoclonal antibody [1B10] recognizes TBCEL
Tested Reactivity	Hu
Tested Application	FACS, WB
Host	Mouse
Clonality	Monoclonal
Clone	1B10
Isotype	IgG2b, kappa
Target Name	TBCEL
Species	Human
Immunogen	Recombinant fragment around aa. 1-424 of Human TBCEL.
Conjugation	Un-conjugated
Alternate Names	Leucine-rich repeat-containing protein 35; EI; Tubulin-specific chaperone cofactor E-like protein; LRRC35; EL

### Application Instructions

Application table	Application	Dilution
	FACS	Assay-dependent
	WB	Assay-dependent

**Application Note** \* The dilutions indicate recommended starting dilutions and the optimal dilutions or concentrations should be determined by the scientist.

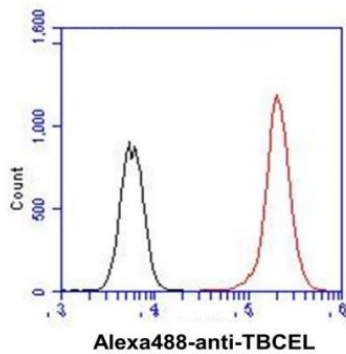
### Properties

Form	Liquid
Purification	Purification with Protein A.
Buffer	PBS (pH 7.4), 0.02% Sodium azide and 10% Glycerol.
Preservative	0.02% Sodium azide
Stabilizer	10% Glycerol
Concentration	1 mg/ml
Storage instruction	For continuous use, store undiluted antibody at 2-8°C for up to a week. For long-term storage, aliquot and store at -20°C. Storage in frost free freezers is not recommended. Avoid repeated freeze/thaw cycles. Suggest spin the vial prior to opening. The antibody solution should be gently mixed before use.
Note	For laboratory research only, not for drug, diagnostic or other use.

## Bioinformation

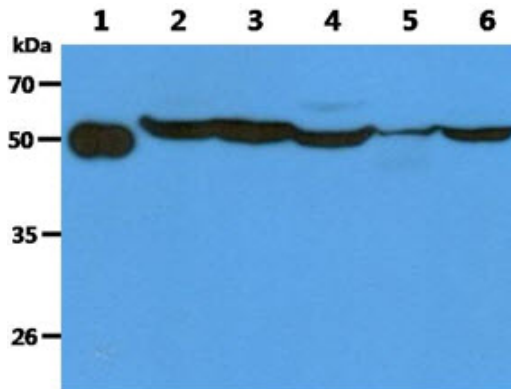
Database links	<a href="#">GeneID: 219899 Human</a> <a href="#">Swiss-port # Q5QJ74 Human</a>
Gene Symbol	TBCEL
Gene Full Name	tubulin folding cofactor E-like
Function	Acts as a regulator of tubulin stability. [UniProt]
Calculated Mw	48 kDa

## Images



ARG57044 anti-TBCEL antibody [1B10] FACS image

Flow Cytometry: PC3 cell line stained with ARG57044 anti-TBCEL antibody [1B10] at 2-5  $\mu\text{g}$  for  $1 \times 10^6$  cells (red line). Secondary antibody: Goat anti-Mouse IgG Alexa fluor 488 conjugate. Isotype control antibody was Mouse IgG (black line).



ARG57044 anti-TBCEL antibody [1B10] WB image

Western blot: 1) 50 ng of Recombinant Human TBCEL, 40  $\mu\text{g}$  of 2) PC3 cell lysate, 3) LNCap cell lysate, 4) 293T cell lysate, 5) Mouse testis lysate, 6) Mouse Kidney lysate stained with ARG57044 anti-TBCEL antibody [1B10] at 1:1000.